

# Rozelle

## 23 Waterloo Street



## Huge family home in the heart of Rozelle

There's space to live and room to grow in this freestanding home in the heart of Rozelle with Darling Street's cafe hub at the top of the street and 500m down to King George Park and the waterfront making it a perfect spot for the active family. On a level 251sqm with invaluable double parking, the two-storey home's imaginative layout features multiple living areas with a large island kitchen as the social heart and four big bedrooms including a parent's retreat and a separate wing that's ideal for teenagers. Lofty raked ceilings on the upper level enhance the sense of space with skylights framing treescape outlooks and huge storage making for comfortable living.

- 10m frontage with a sunny NE facing courtyard garden
- 4 large bedrooms with built-ins plus a separate home office
- Main bed with a walk-in robe, ensuite and private deck
- Teenager's wing with a living room and designer bathroom

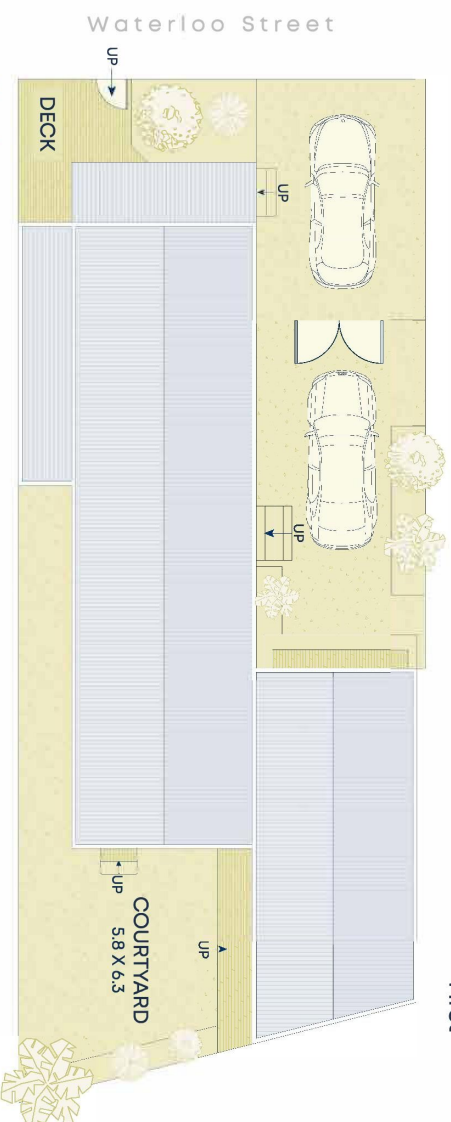
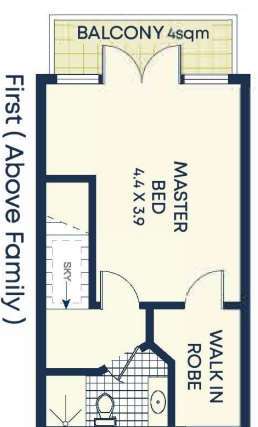
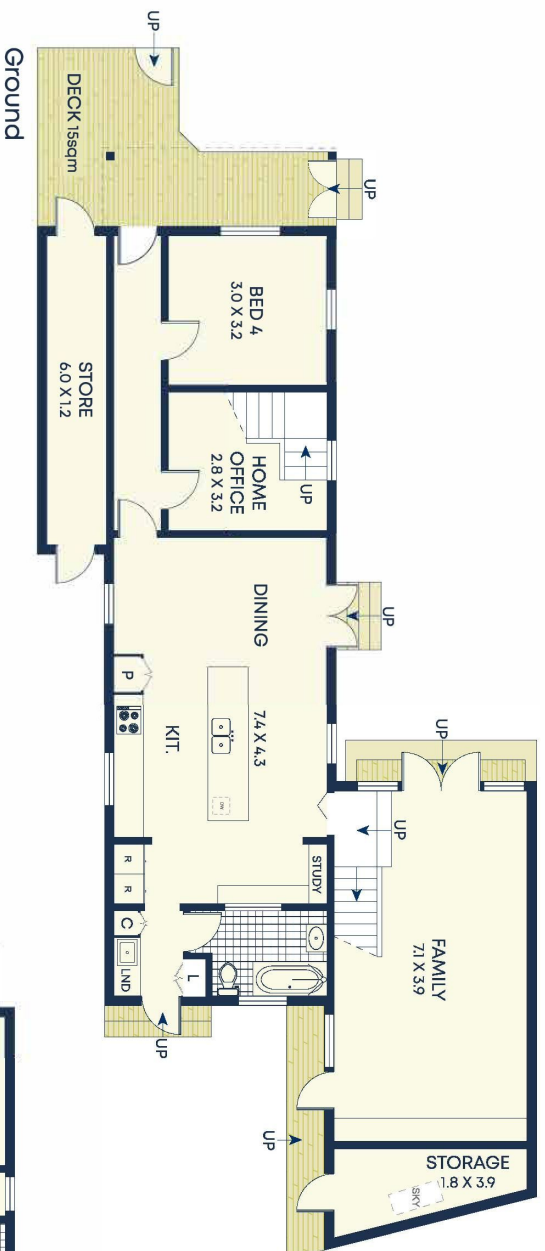
		
4	3	2

### ADDITIONAL DETAIL

Council Rates	\$435/qtr (approx)
Water Rates	\$169/qtr (approx)
Type	House
Sold Date	07/06/2022

Undisclosed

**Peter Gordon**  
0410 639 989  
peter@ch.com.au



**Size (approx)**

- Internal 201sqm
- External 156sqm
- Land Size 251sqm

**Outgoings**

- Council Rates \$4,350/p/q
- Water Rates \$1,690/p/q



DISCLAIMER: This information has been prepared as a guide only and is not intended to be relied upon as a guarantee. Agents, trading as Cobden & Hayson, make no warranties as to its accuracy and all interested parties must rely on their own enquiries.