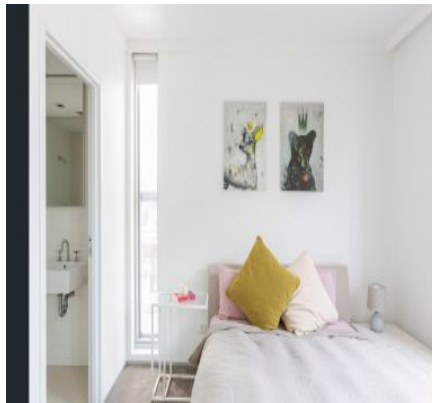
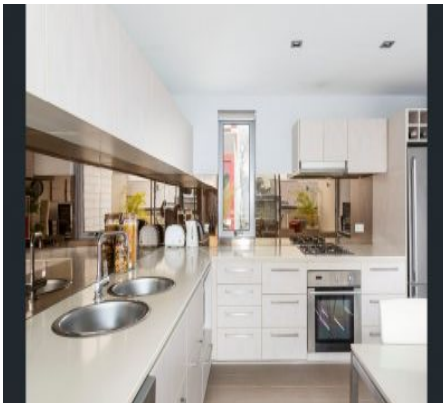


Camperdown

19/8 Sparkes Street



Deposit Taken

North-Facing Apartment with Parking

This top floor, north-facing apartment is a modern design in a boutique-style development with oversized living space and indoor/outdoor entertaining. You're moments to the University, RPA Hospital, buses and CBD.

- Double bedrooms with built-in wardrobes, main has ensuite with bath
- Main bathroom with shower and internal laundry
- Stone kitchen with s/steel gas appliances and dishwasher
- North-facing balcony with gas connection for BBQ
- Secure parking space w/ storage cage
- Ducted heating/cooling
- Lift access to apartment
- Intercom entry in a security building
- District views & rare sense of privacy

		
2	2	1

ADDITIONAL DETAIL

Type

Apartment

Annika Pedersen

annika@ch.com.au

Jessica Plug

jessica@ch.com.au