

Leichhardt

26 Wetherill Street



Undisclosed

A stylish village haven with a sunny garden oasis

The pretty facade of this freestanding Victorian cottage makes a welcoming first impression but it's the landscaped north facing garden with its lush lawn framed by leafy greenery that makes it such a great home for families. In a fantastic neighbourhood, 100m to Norton Street's village hub, the three-bedroom home is perfectly configured for relaxed indoor/outdoor living with bright and airy interiors and an easy flow through layout. Soak up the sunshine in the private backyard or step outside and immerse yourself in Norton Street's vibrant cultural and dining scene.

- Level 253sqm with a landscaped north facing garden oasis
- 3 double bedrooms with built-ins, classic high ceilings
- Bright living room, polished floorboards, wide French doors
- Quality granite-topped gas kitchen and open plan dining
- Casual living with a sunny study bay with garden outlook


3

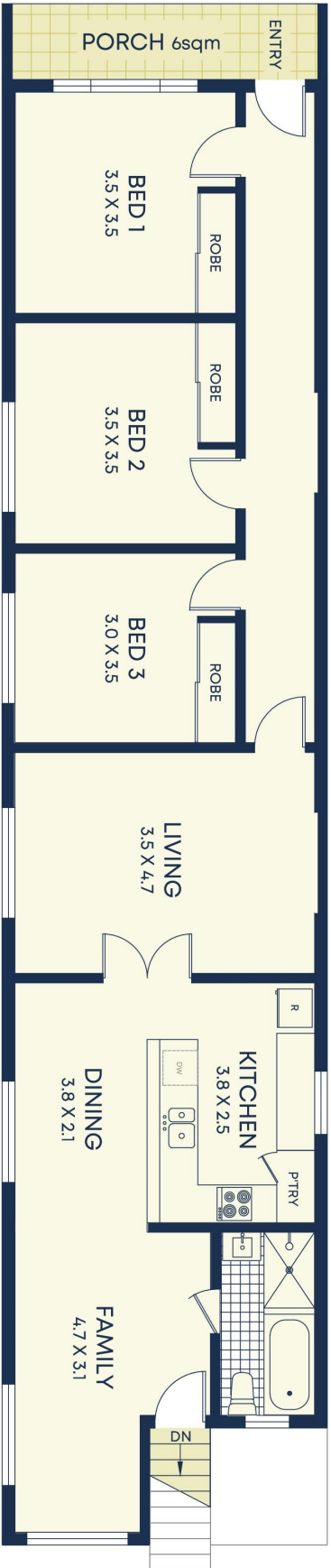
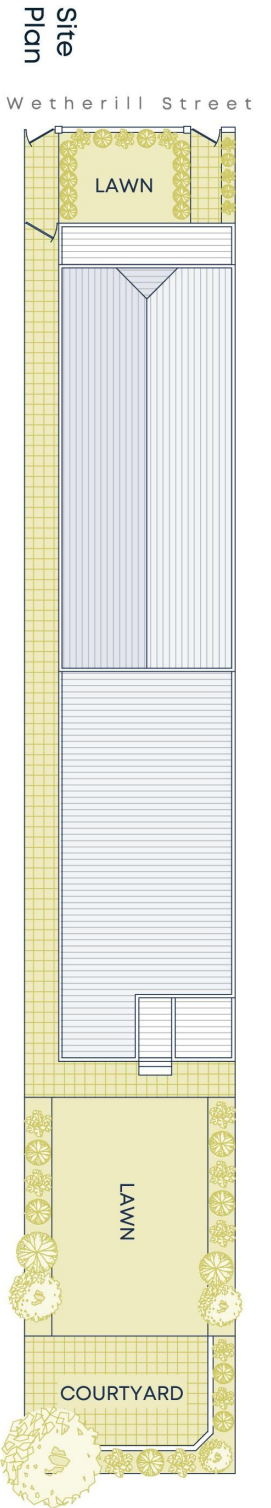

1

ADDITIONAL DETAIL

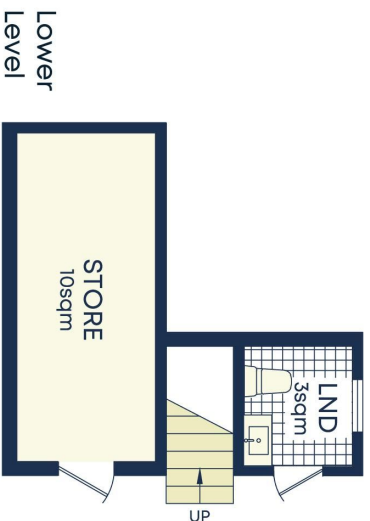
Council Rates	\$431/qtr (approx)
Water Rates	\$171/qtr (approx)
Type	House
Sold Date	11/11/2021
Land	253 Square Metres

Jonathan Hammond
0425 252 686
jono@ch.com.au

Kelly Smith-Cunningham
0414 070 020
kellys@ch.com.au



Entry Level



Lower Level

Size (approx)

- Internal 108sqm
- External 142sqm
- Land Size 253sqm

Outgoings

- Council Rates \$431p/q
- Water Rates \$171p/q

DISCLAIMER: This information has been prepared as a guide only. The vendor and the real estate agent, Annandale Agency Management Pty Ltd (trading as Cobden & Hoyson Annandale), make no warranties as to its accuracy and all interested parties must rely on their own enquiries.