

# Marrickville

## 185 Addison Road



\$2m

## Easy inner west style with a modern feel

An inviting surprise of light-filled and generous living spaces are revealed behind the classic image of this period semi. Cleverly updated and redesigned with a second level extension to offer a spacious and easycare residence, it features a range of smart modern finishes and a layout that's ideal for in/outdoor entertaining. This is the quintessential inner west abode and is ideally located on the Enmore border within a stroll to Enmore Park, Marrickville Metro and Newtown cafes.

- A perfect north aspect that brings in excellent natural light
- Bright and airy interiors feature a well-sized open plan design
- Sheltered entertainment deck with a leafy easycare garden
- An upper-level main bedroom with built-ins and bathroom
- Modern Caesarstone kitchen equipped with quality gas fittings
- Two downstairs bedrooms with built-ins plus attic storage
- Air-conditioning, ceiling fan and gas heating connections

  
3

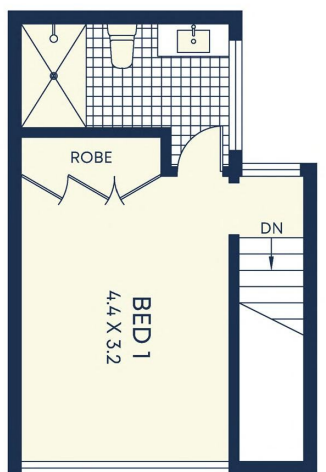
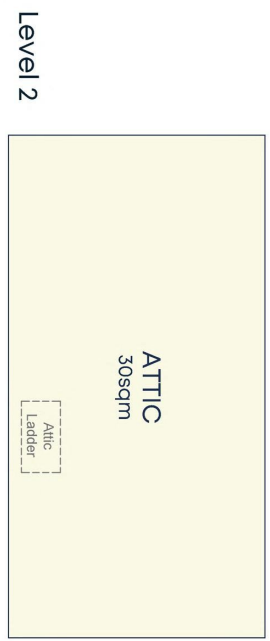
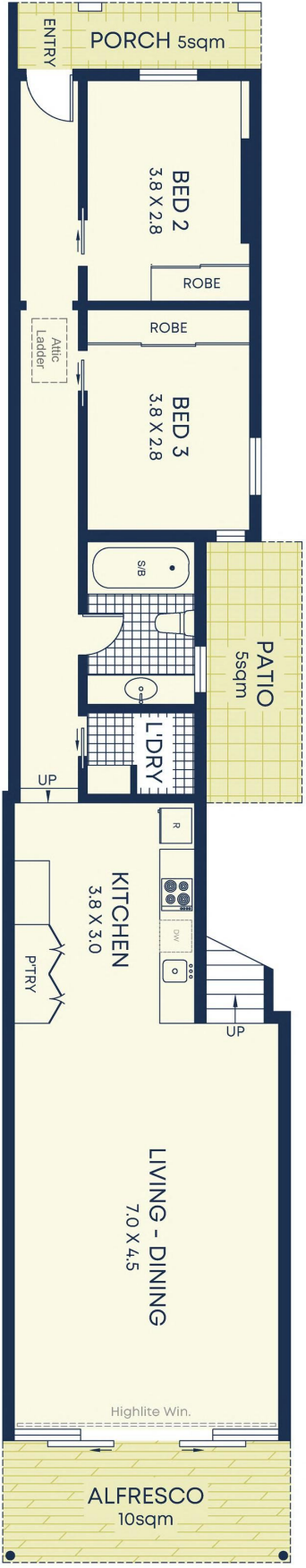
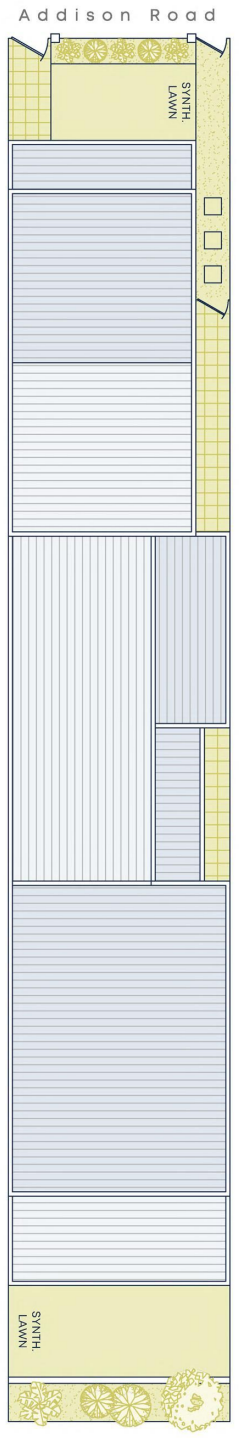
  
2

## ADDITIONAL DETAIL

|               |                     |
|---------------|---------------------|
| Council Rates | \$334/qtr (approx)  |
| Water Rates   | \$170/qtr (approx)  |
| Type          | House               |
| Sold Date     | 19/10/2021          |
| Land          | 158.1 Square Metres |

**Alex Mastoris**  
0414 567 878  
alexm@ch.com.au

**Kate Fitzsimmons**  
0424 782 291  
katef@ch.com.au



**Size (approx)**

- Internal 120sqm
- External 66sqm
- Land Size 158.1 sqm

**Outgoings**

- Council Rates \$334p/q
- Water Rates \$170p/q

**DISCLAIMER:** This information has been prepared as a guide only. The vendor and the real estate agent, Amundale Agency Management Pty Ltd (trading as Cobden & Hoysen Amundale), make no warranties as to its accuracy and all interested parties must rely on their own enquiries.