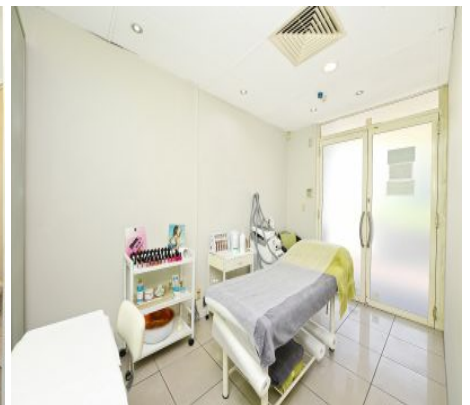
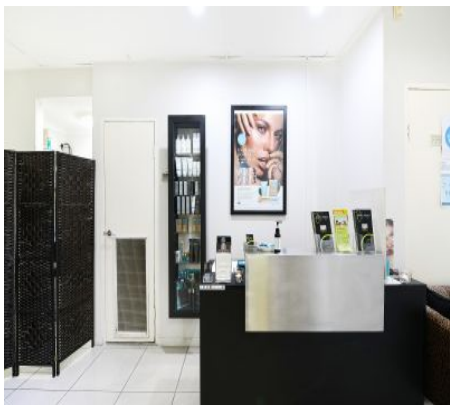


Chiswick

63/2 Shore Road



For Sale \$895k

Invest now or occupy later

This strata commercial space is ideally located on the corner of Shore and Blackwall Point Road being a main arterial road offering maximum exposure for the occupying business. Part of the Riviera bayside development with mixed commercial and residential occupants it offers the convenience to both business owners and locals using their services.

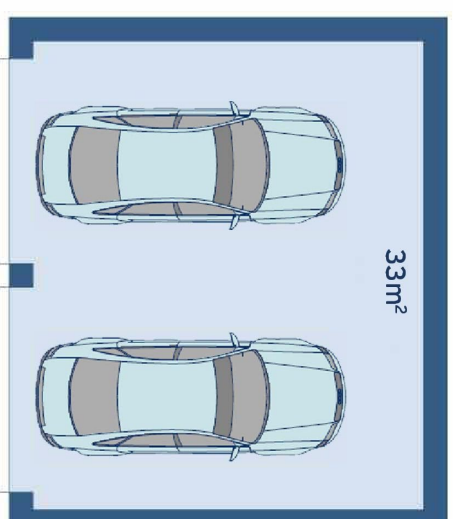
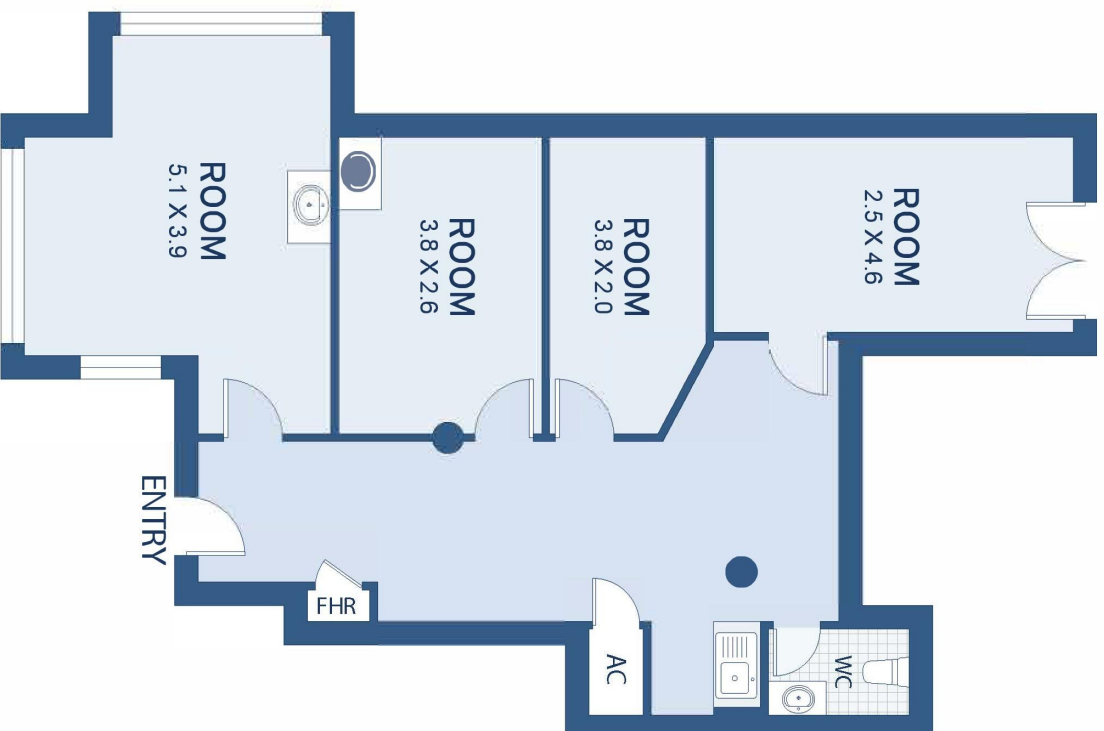
- Current use Hairdresser / Beautician
- Comprising open salon area
- 3 additional consultation rooms
- Own W/C + kitchenette facilities
- Floor to ceiling windows filled with natural light
- Current lease expiring April 2022
- Superfund investment or first investment
- Double security parking

ADDITIONAL DETAIL

Council Rates	\$0/qtr (approx)
Strata Fees	\$0/qtr (approx)
Water Rates	\$0/qtr (approx)
Type	Retail

Mia Fredrix
0416 223 699
mia@ch.com.au

Eddy Faila
0418 111 760
eddy@ch.com.au



APPROXIMATE AREAS	
Parking	33sqm
Internal	109sqm
Total	142sqm

Chiswick
63/2 Shore Road

DISCLAIMER: This information has been prepared as a guide only. The vendor and the real estate agent, Drummond Estate Agency Pty Ltd (trading as Cobden & Hayson Drummond), make no warranties as to its accuracy and all interested parties must rely on their own enquiries.

cobden & hayson