

Ashfield

1/32 Chandos Street



\$1.033m

Terrace-style townhouse in an idyllic garden setting

Holding a coveted corner position in the tightly held Avondale complex, this private two storey townhouse is bathed in northerly sunshine with views over lush park-like gardens and pool giving it a tranquil resort-like vibe. Recently renovated and impeccably presented, the two bedroom home features a private entry and opens to a north-west entertainer's terrace with greenery all around. Combining quiet privacy with superb convenience, this hidden gem is a 700m walk to Ashfield station and town centre and features a lock-up garage on title.

- Whole-floor living and dining with polished timber flooring
- Large entertainer's terrace overlooking the gardens and pool
- Sunny modern kitchen with a breakfast bar, ample storage
- 2 upper level double bedrooms featuring lofty raked ceilings
- Main bedroom with built-in robes, new carpet, ceiling fans
- Family sized bathroom, separate laundry and powder room

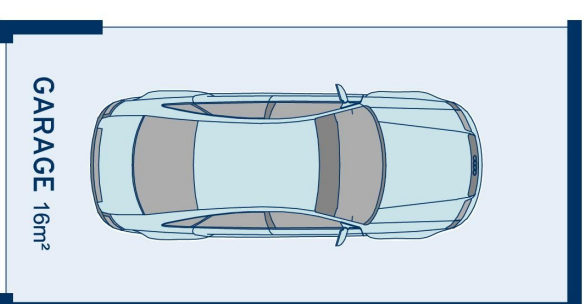
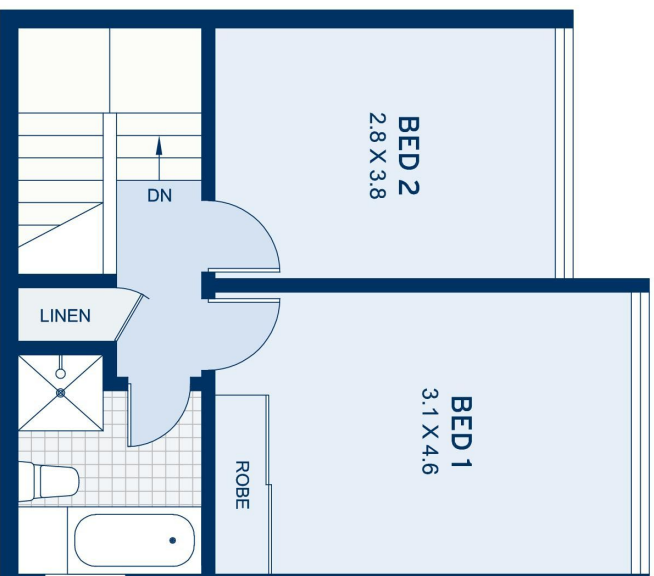
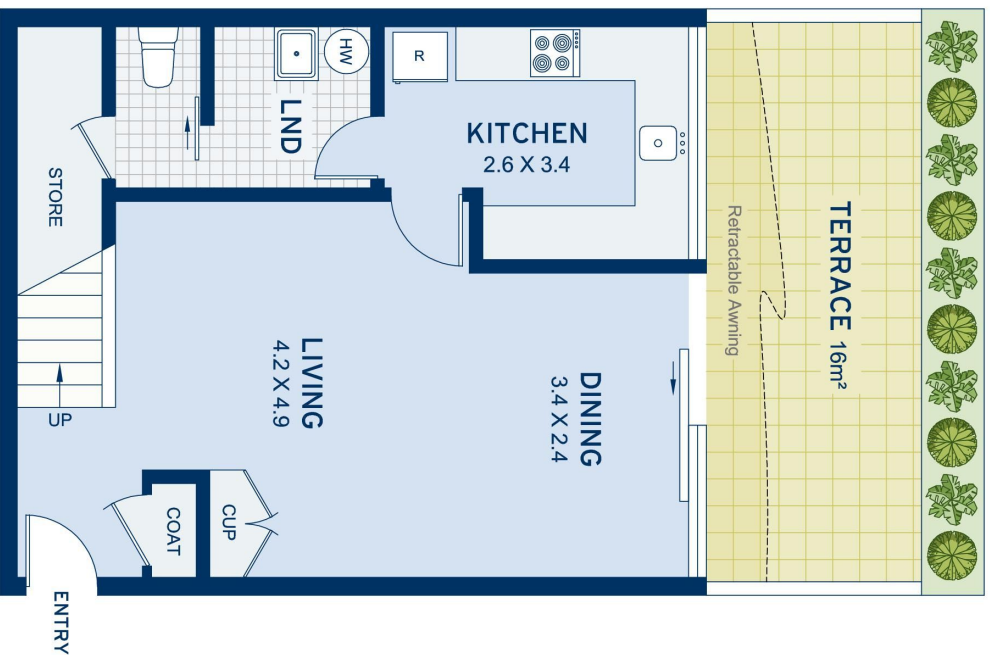


ADDITIONAL DETAIL

Council Rates	\$373/qtr (approx)
Strata Fees	\$1,265/qtr (approx)
Water Rates	\$152/qtr (approx)
Type	Apartment
Sold Date	22/05/2021

Mia Fredrix
0416 223 699
mia@ch.com.au

Nicola d'Arbon
0421 433 413
nicola@ch.com.au



APPROXIMATE AREAS	
Residence	99sqm
Garage	16sqm
Total	115sqm
OUTGOINGS	
Council Rates	\$373 pq
Water Rates	\$152 pq
Strata Rates	\$1265 pq

Ashfield
1/32 Chandos Street

DISCLAIMER: This information has been prepared as a guide only. The vendor and the real estate agent, Drummoyne Estate Agency Pty Ltd (trading as Cobden & Hayson Drummoyne), make no warranties as to its accuracy and all interested parties must rely on their own enquiries.

cobden & hayson