

Stanmore

8/78 Cambridge Street



Boutique sanctuary in a converted Victorian mansion

Victorian grandeur and boutique charm come together in this top floor apartment to offer a perfect entry to the coveted Stanmore market. Capturing views over Montague Gardens from its peaceful rear position, the freshly schemed apartment is one of 8 in a converted manor residence with leafy outlooks from every room, original Kauri floorboards and 3.1m ceilings enhancing the sense of space. It's just 350m to the station and a short walk to the European-style village hub and Enmore Road's lively dining and small bar scene.

- Top floor of a beautifully refurbished Victorian mansion
- Grand secure entry hall and manicured common gardens
- King sized bedroom with built-ins and a quiet leafy vista
- Light-filled living room, high ceilings, wide Kauri boards
- Modern kitchen and a sunny deck with a lovely park outlook
- Big, bright renovated bathroom with a frameless glass shower

Undisclosed

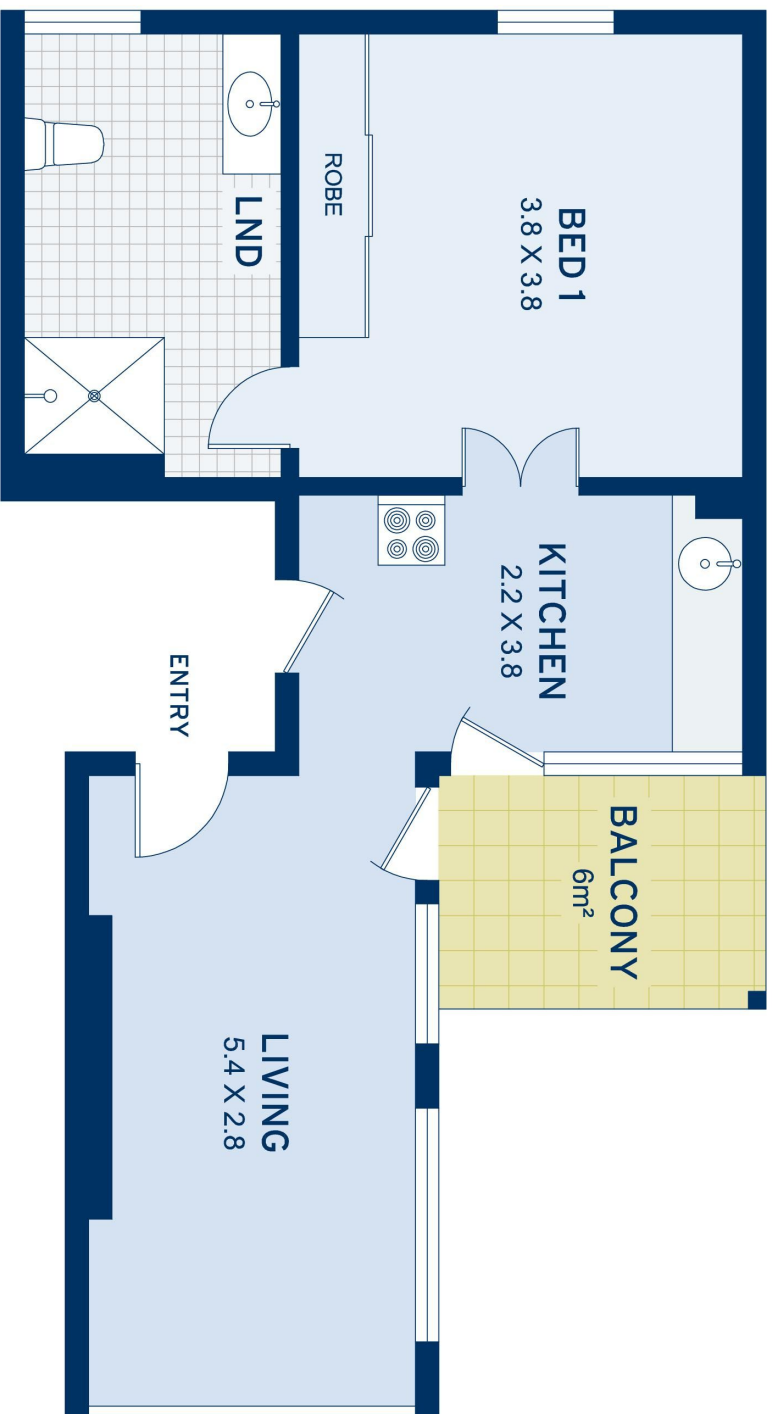

1


1

ADDITIONAL DETAIL

Type	Apartment
Sold Date	21/01/2021

Stephanie Zerial
0450 050 154
stephaniez@ch.com.au



APPROXIMATE AREAS	
Apartment	56sqm
Store	6sqm
Total	62sqm
OUTGOINGS	
Council Rates	\$325 pq
Water Rates	\$170 pq
Strata Rates	\$1213 pq

Stammore
8/78 Cambridge Street

DISCLAIMER: This information has been prepared as a guide only. The vendor and the real estate agent, Annandale Estate Agency Management Pty Ltd (trading as Cobden & Hayson Annandale), make no warranties as to its accuracy and all interested parties must rely on their own enquiries.