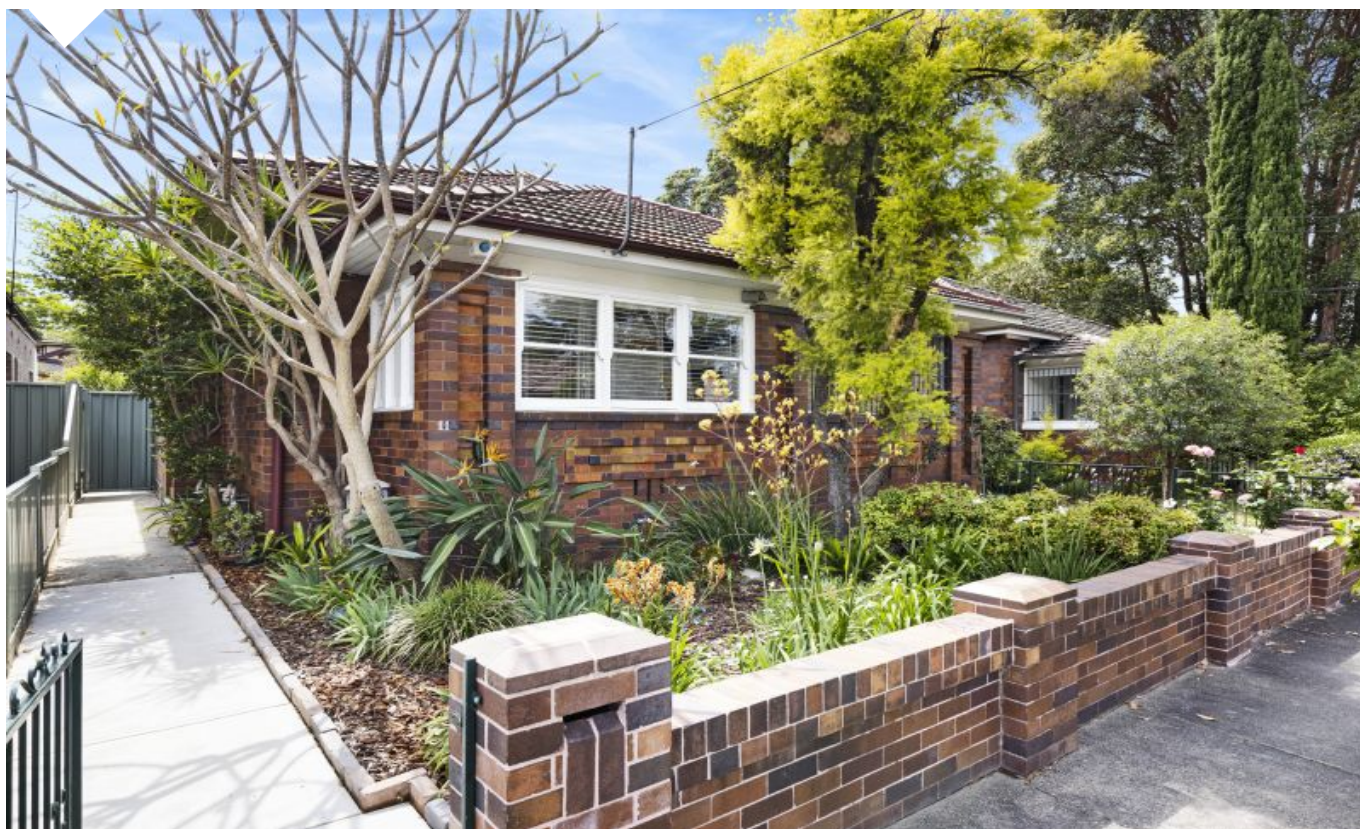


Marrickville

11 Hollands Avenue



\$1.345m

Character semi with a fresh modern edge

Classic Marrickville living takes on a bright and modern approach with this freshly updated period semi. Behind its vintage brick facade is a light and airy residence that's been tastefully upgraded and designed to provide a great space for low maintenance living. It is also quietly located within easy access to cafes and restaurants at both Marrickville and Dulwich Hill, and makes a ready-to-live-in property with significant ownership rewards for those looking for a fantastic inner west home.

- Bright breezy layout with an open living and dining area
- Northeasterly rear aspect and natural light throughout
- Sunlit back garden and paved area with rear lane access
- Up-to-date kitchen equipped with quality gas fittings
- Two good-sized bedrooms plus a sunroom/home office
- Set in a quiet street with plenty of parking available
- Footsteps to Ness Park, walk to trains, buses and schools


2


1

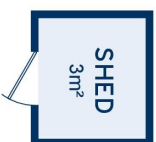
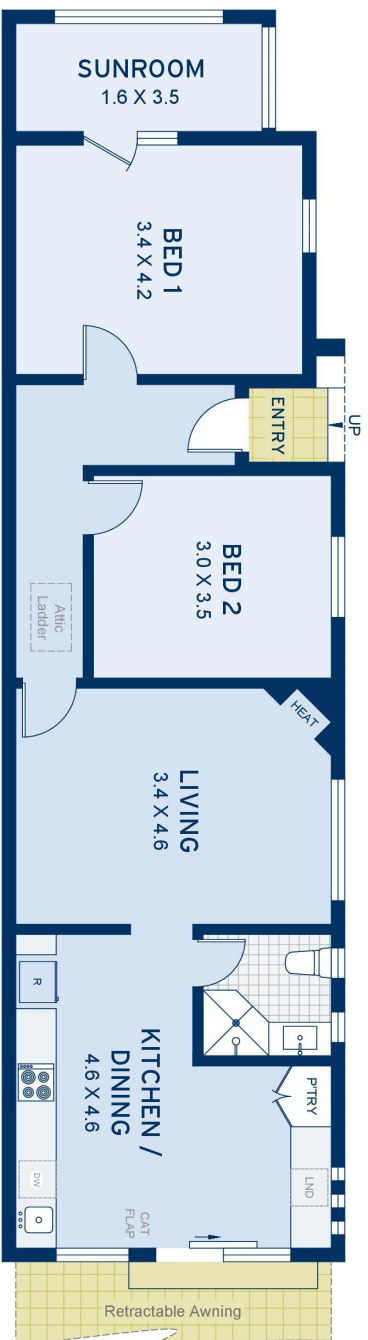
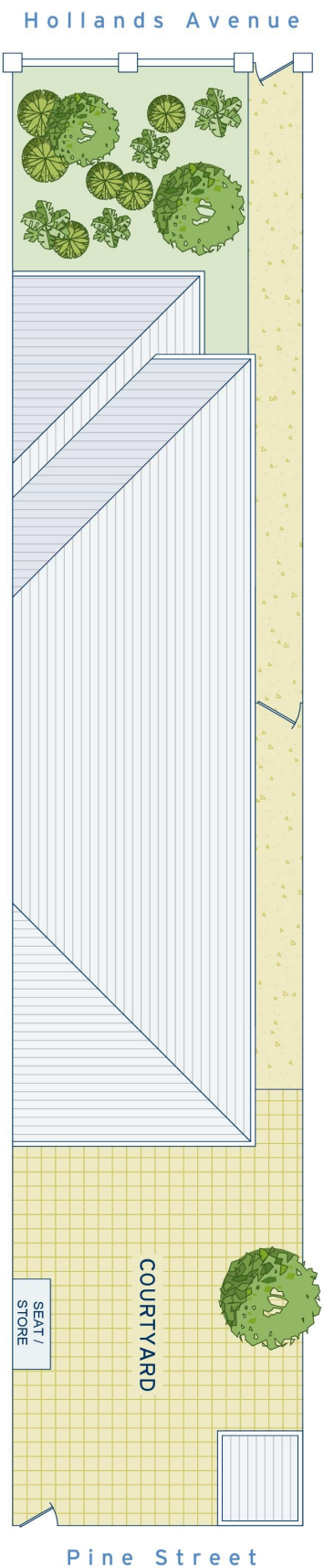
ADDITIONAL DETAIL

Council Rates	\$371/qtr (approx)
Water Rates	\$273/qtr (approx)
Type	House
Sold Date	21/11/2020
Land	186 Square Metres

Joseph Karam
0423 908 844
josephk@ch.com.au

Jim Nikolopoulos
0406 626 663
jim@ch.com.au

SITE PLAN



APPROXIMATE AREAS	
Internal Floor Space	84sqm
Attic	75sqm
Land Size	186sqm
OUTGOINGS	
Council Rates	\$371 pq
Water Rates	\$274 pq

Marrickville
11 Hollands Avenue

DISCLAIMER: This information has been prepared as a guide only. The vendor and the real estate agent, The IW Agency Pty Ltd (trading as Cobden & Hayson Earwood/Marrickville), make no warranties as to its accuracy and all interested parties must rely on their own enquiries.

cobden & hayson