

Leichhardt

35/23 Norton Street



Contact Agent

Contemporary dual level village retreat

A house-like two storey layout, recently renovated interiors and sunny north aspect combine in this family sized apartment to offer a superb low-maintenance home in the landmark Italian Forum. With one of the best positions in the European inspired complex, the townhouse-style apartment is set to the quiet rear on level two of Palazzo Roma with sweeping district views from the upper level. Direct access to Norton Plaza's retail precinct offers easy convenience with double security parking on title as well as access to an on-site gym and sauna.

- Peaceful and private rooftop setting, north facing terrace
- Sun-filled living and dining rooms, dedicated study area
- Quality Caesarstone gas kitchen and polished floorboards
- 3 upper level double beds with built-ins, master ensuite
- Large windows frame district views out over the rooftops
- 2 stylish bathrooms, powder room and an internal laundry



3



2



2

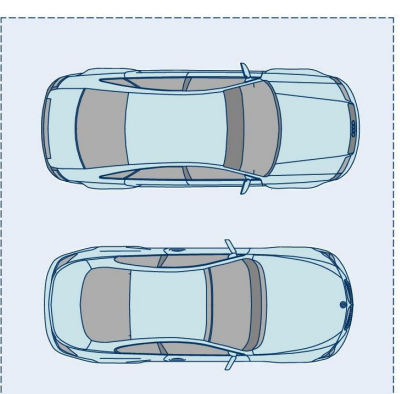
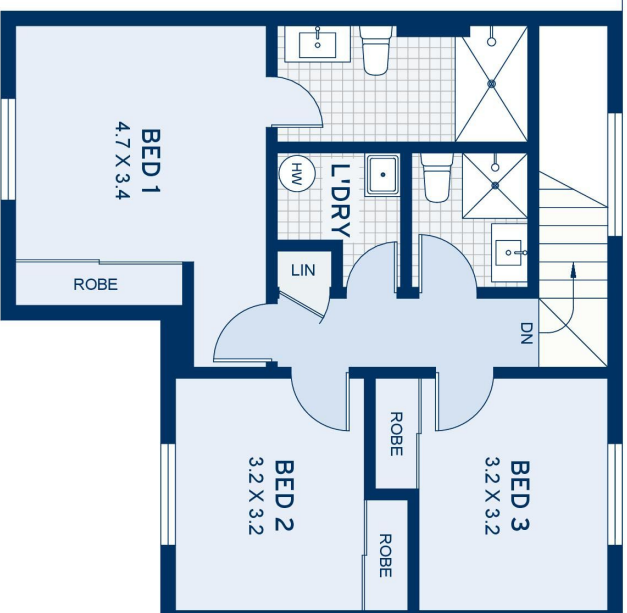
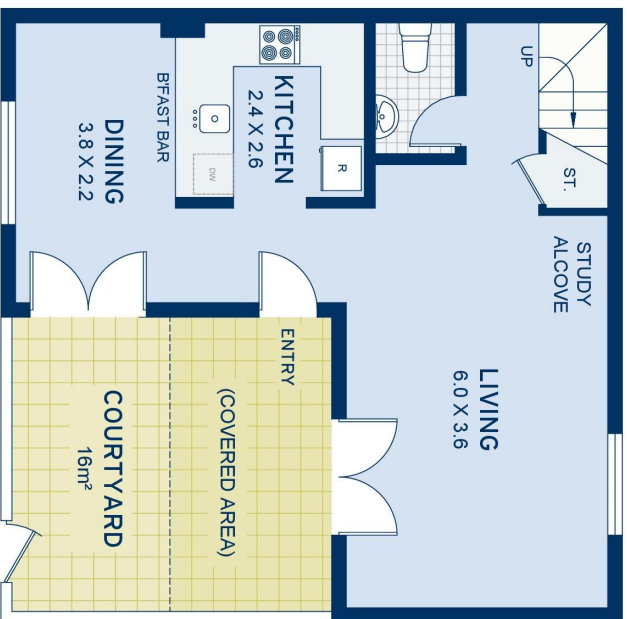
ADDITIONAL DETAIL

Type

Apartment

Santosulfaro
0402 680 861
santos@ch.com.au

Frankulfaro
0410 645 037
franks@ch.com.au



APPROXIMATE AREAS	
Internal Floorpace	104sqm
Parking	27sqm
External	16sqm
Total	147sqm
OUTGOINGS	
Council Rates	\$310 pq
Water Rates	\$154 pq
Strata Admin.	\$1210 pq
Capital Works	\$449 pq

Leichhardt
35/21-23 Norton Street

DISCLAIMER: This information has been prepared as a guide only. The vendor and the real estate agent, Annandale Estate Agency Management Pty Ltd (trading as Cobden & Hayson Annandale), make no warranties as to its accuracy and all interested parties must rely on their own enquiries.

cobden & hayson