

Abbotsford

28 Curtin Avenue



Cutting edge architecturally designed home, prestige setting

A harmonious blend of cutting edge contemporary style and modern functionality, this brand new residence demands to be seen. Expertly designed and finished to perfection, it celebrates a calming luxe style boasting an extensive range of customised finishes that pamper and indulge. Relax and entertain in style, in a prestige walk to the shops, bus and school setting. A beautiful home in a class of its own.

- North to rear aspect fills its interiors with natural light
- Central atrium courtyard, polished concrete floors
- Expansive living and dining, full wall of glass sliders
- Stunning custom joinery, ducted a/c, video intercom
- Superb alfresco terrace with outdoor gas fireplace
- Luxe Limestone wrapped designer island gas kitchen
- Ilve appliances, custom-fitted study, powder room
- Master with private garden balcony, ensuite and robes, large beds

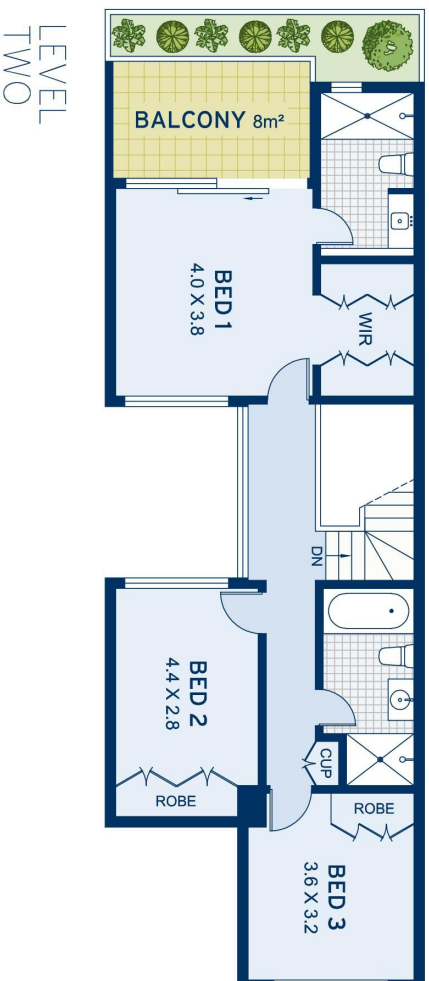
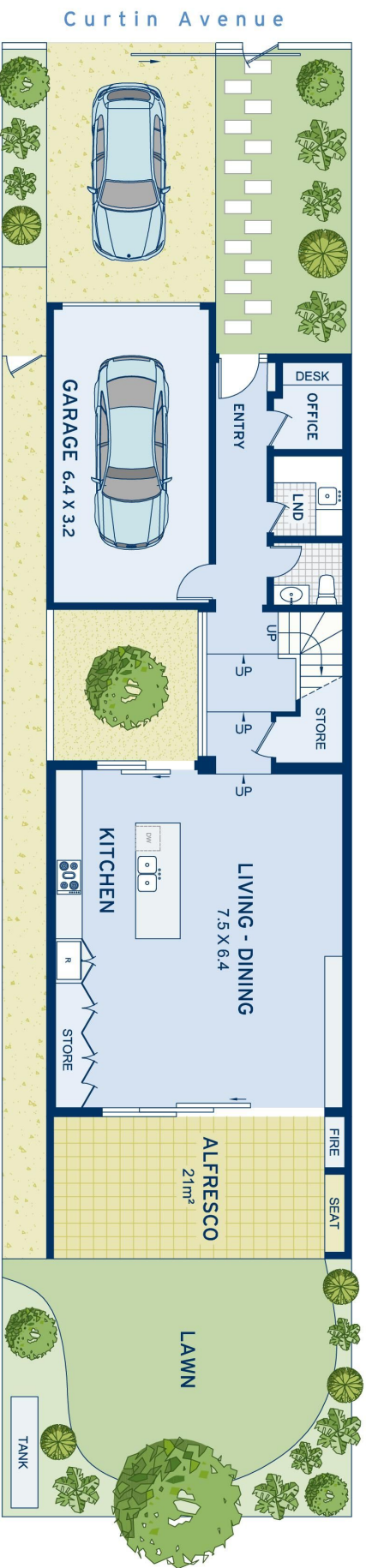


ADDITIONAL DETAIL

Council Rates	\$428/qtr (approx)
Water Rates	\$177/qtr (approx)
Type	House
Sold Date	16/10/2020
Land	258 Square Metres

Ben Southwell
0407 896 212
bens@ch.com.au

Marcus Hejtmanek
0488 019 665
marcus@ch.com.au



APPROXIMATE AREAS	
Internal Floor Space	155sqm
Garage	23sqm
Land Size	258sqm
OUTGOINGS	
Council Rates	\$428 pq
Water Rates	\$177 pq

Abbotsford
28 Curtin Avenue

DISCLAIMER: This information has been prepared as a guide only. The vendor and the real estate agent, Annandale Estate Agency Management Pty Ltd (trading as Cobden & Hayson Annandale), make no warranties as to its accuracy and all interested parties must rely on their own enquiries.

cobden & hayson