

Ashfield

60/18-20 Knocklayde Street



\$828k

Resort-style living in a tranquil garden setting

Set amid the manicured estate-like grounds of the Green Trees complex, this oversized two-bedroom apartment's huge entertainer's terrace and leafy outlooks set the scene for a relaxed lifestyle with resort-style facilities at the doorstep. House-like proportions and an easy in/outdoor flow make for comfortable low-maintenance living with 169sqm of living space and a double lock-up garage. Enjoy a holiday like feeling all year long with direct access to a heated pool, spa, sauna, gym and child-friendly gardens as well as 24 hour security and an on-site caretaker.

- Premier position opposite the Village Green, boutique secure entry
- Excellent layout with separate living and accommodation wings
- 2 double beds with built-ins & courtyard, large master with ensuite

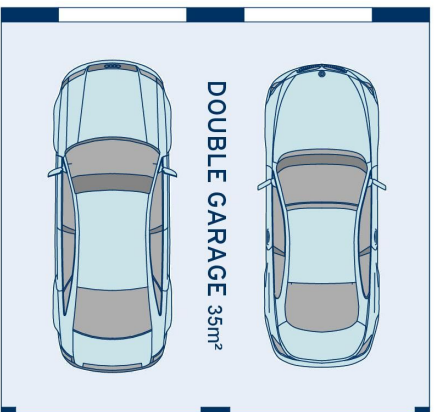
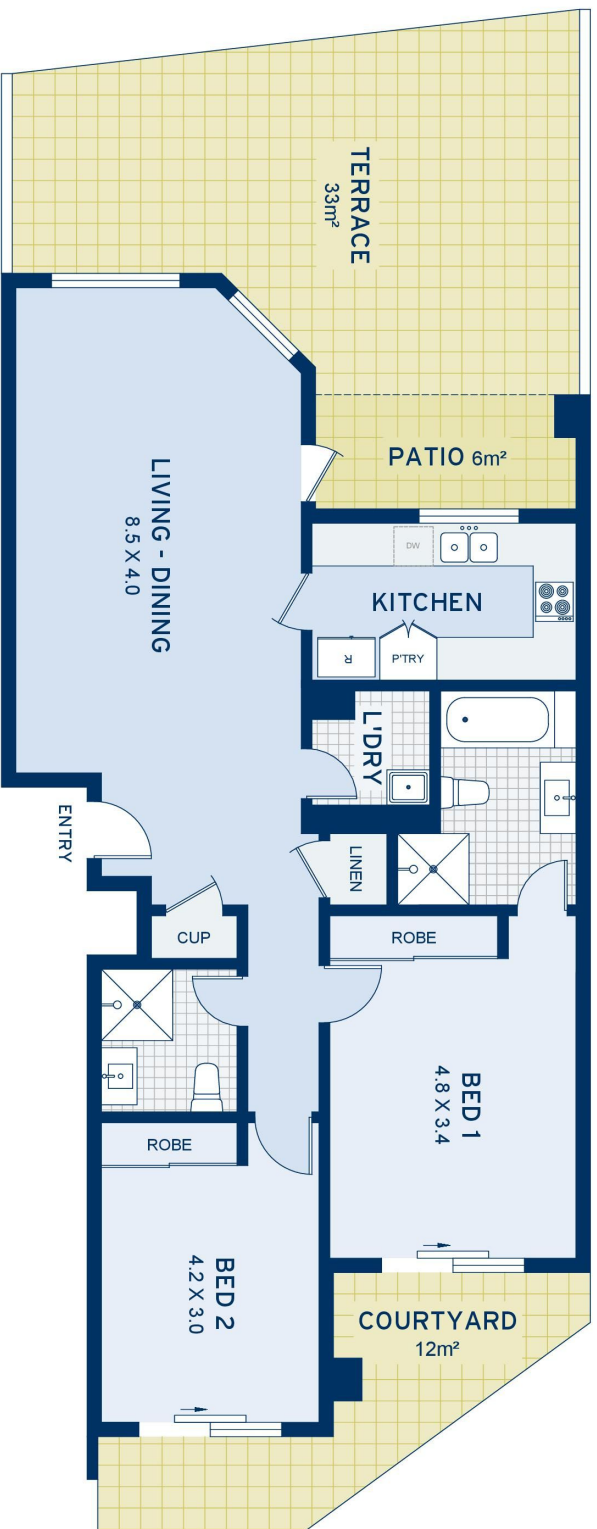


ADDITIONAL DETAIL

Council Rates	\$358/qtr (approx)
Strata Fees	\$1,342/qtr (approx)
Water Rates	\$153/qtr (approx)
Type	Apartment
Sold Date	25/11/2020

Justine Collins
0410 601 707
justine@ch.com.au

Ralph Daher
0488 060 118
ralph@ch.com.au



APPROXIMATE AREAS	
Residence	134sqm
Garage	35sqm
Total	169sqm
OUTGOINGS	
Council Rates	\$358 pq
Water Rates	\$153 pq
Strata Levies	\$1342 pq

Ashfield
60/18-20 Knocklayde Street

DISCLAIMER: This information has been prepared as a guide only. The vendor and the real estate agent, Balmain Real Estate Pty Ltd and/or Balmain Estate Agency Pty Ltd (trading as Cobden & Hayson Balmain), make no warranties as to its accuracy and all interested parties must rely on their own enquiries.

cobden & hayson