

Lilyfield

166 Lilyfield Road



\$1.4m

Spacious cottage on 221sqm

A stylish blend of classic charm and contemporary design delivers a welcoming feel in this 6m wide 1920s semi with an indoor/outdoor flow that invites relaxation. Set amid landscaped gardens between the Bay Run and the light rail, the bright and airy home is wrapped in Blackbutt decks with a child-friendly garden at the rear and scope to extend and develop the huge attic space in the future (STCA). Minutes to the city, this beautifully presented home offers a relaxed Lilyfield lifestyle a short walk to Orange Grove Public School, Farmers Market and Norton Street's dining hub.

- Travertine entry, polished floorboards and high ornate ceilings
- Double bedrooms with built-ins and a freshly schemed bathroom
- King sized master with a deck overlooking the sunny front garden
- Large living room with a cast-iron gas fireplace and reverse air


2

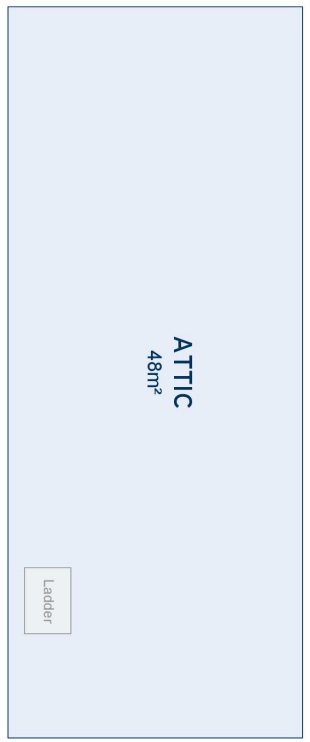
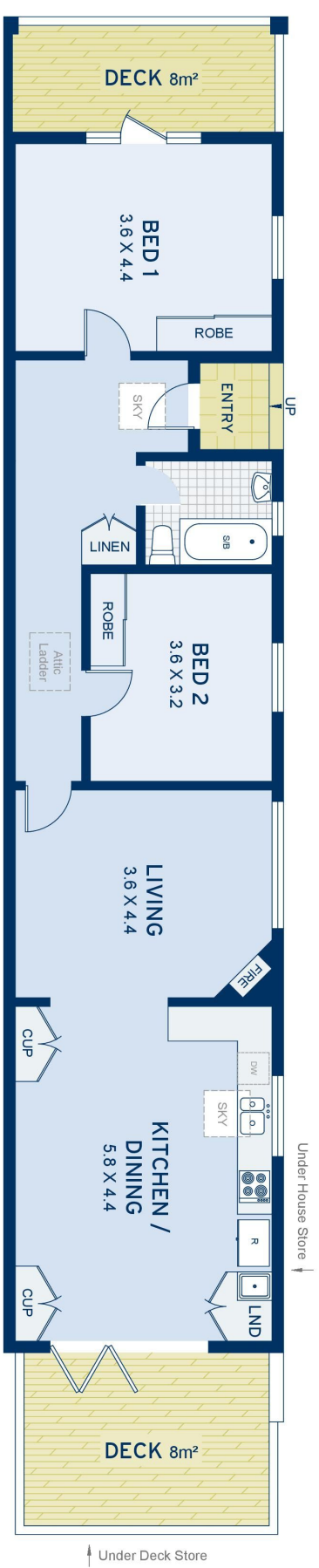
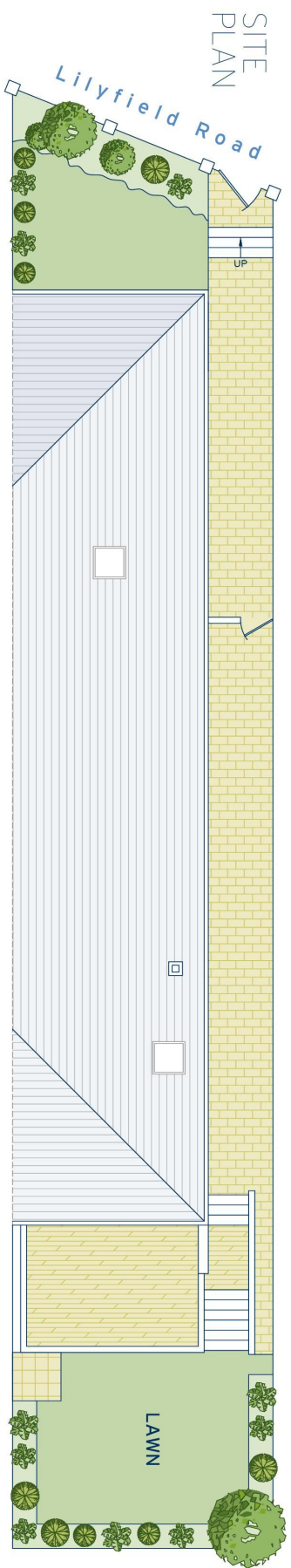

1

ADDITIONAL DETAIL

Council Rates	\$400/qtr (approx)
Water Rates	\$147/qtr (approx)
Type	House
Sold Date	14/10/2020
Land	221 Square Metres

Peter Gordon
0410 639 989
peter@ch.com.au

Ralph Daher
0488 060 118
ralph@ch.com.au



APPROXIMATE AREAS	
Internal Floorpace	90sqm
External	131sqm
Land Size	221sqm
OUTGOINGS	
Council Rates	\$400 pq
Water Rates	\$147 pq

Lilyfield
166 Lilyfield Road

DISCLAIMER: This information has been prepared as a guide only. The vendor and the real estate agent, Balmain Real Estate Pty Ltd and/or Balmain Estate Agency Pty Ltd (trading as Cobden & Hayson Balmain), make no warranties as to its accuracy and all interested parties must rely on their own enquiries.

cobden & hayson