

Leichhardt

48 North Avenue



Undisclosed

A family classic with a bright future

Just around the corner from Evans Jones Playground, between Norton Street and Annandale village, this 6m wide semi bears all the hallmarks of a superb family home on one of Leichhardt's prettiest streets. North facing at the rear with parking via Thorby Avenue, the Federation classic has been tastefully updated but it's the scope to add a level that will really capture your imagination. With a sun-drenched courtyard that's perfect for alfresco living, this bright and spacious home is a short walk to renowned eat streets, great schools and Whites Creek Valley Park.

- A family classic on a prized avenue close to Annandale village
- 2 double bedrooms with built-ins, original Kauri floorboards
- Lounge with a RealFlame gas fire and beautiful domed ceilings
- Dining with integrated study and a sunny north facing courtyard

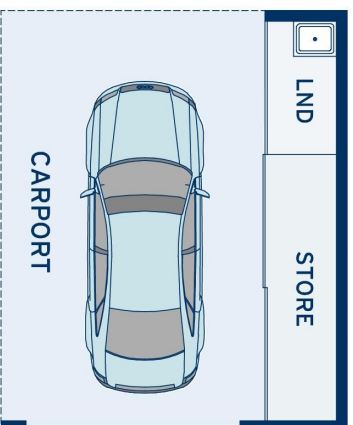
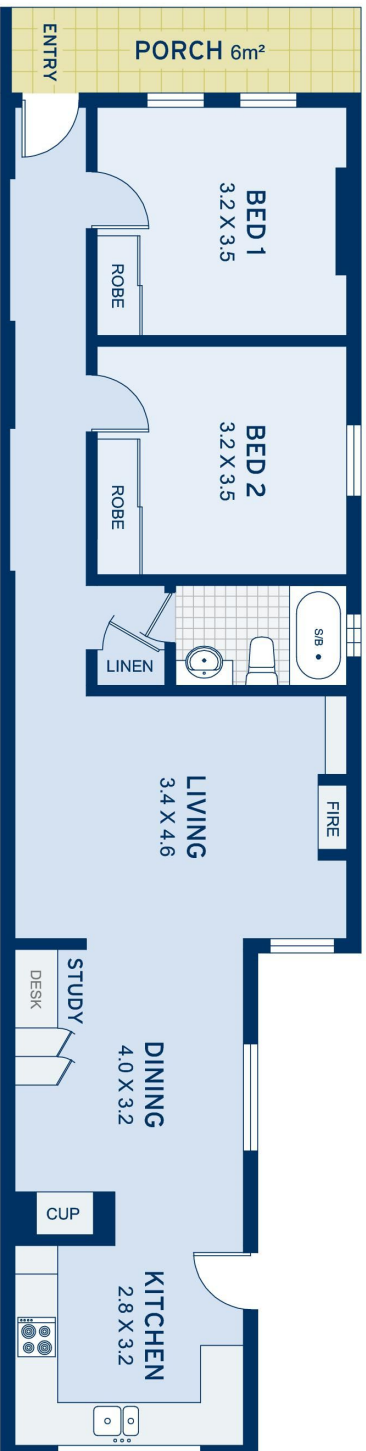
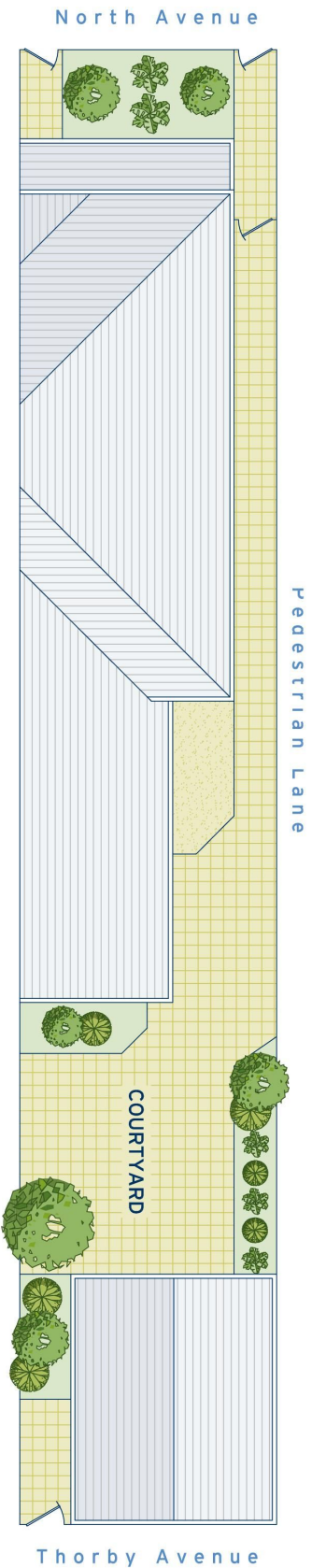


ADDITIONAL DETAIL

Council Rates	\$475/qtr (approx)
Water Rates	\$167/qtr (approx)
Type	House
Sold Date	12/09/2020
Land	200 Square Metres

Peter Gordon
0410 639 989
peter@ch.com.au

SITE PLAN



APPROXIMATE AREAS	
Internal Floorspace	81sqm
Carport, Lnd, Store	27sqm
External	92sqm
Land Size	200sqm
OUTGOINGS	
Council Rates	\$475 pq
Water Rates	\$167 pq



Leichhardt
48 North Avenue

DISCLAIMER: This information has been prepared as a guide only. The vendor and the real estate agent, Balmain Real Estate Pty Ltd and/or Balmain Estate Agency Pty Ltd (trading as Cobden & Hayson Balmain), make no warranties as to its accuracy and all interested parties must rely on their own enquiries.

cobden & hayson