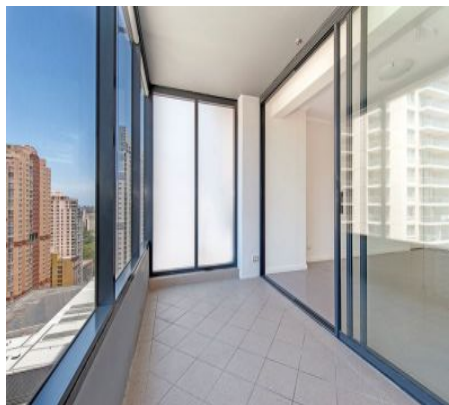


Sydney

3412/91-93 Liverpool Street



\$595 pw

THE MOST AFFORDABLE ONE BEDROOM APARTMENT IN WORLD TOWER!

This immaculate one bedroom, plus study apartment is situated in the well known CBD "World Tower" building. It is centrally located just a short walk to Town Hall Train Station, QVB Building, Chinatown and Darling Harbour. Perfectly suited for professional couples and singles who enjoy city living and lifestyle.

- One bedroom plus additional study
- Kitchen with gas cook top & dishwasher
- Modern bathroom with separate bath
- Air conditioned living area opens to large winter garden
- Internal laundry with dryer
- Security car space & storage cage
- Security building with onsite building manager



ADDITIONAL DETAIL

Type

Apartment

Christie Nguyen

christie@ch.com.au