

# Abbotsford

## 31/1 Figtree Avenue



Undisclosed

## Move in, relax and entertain

Tucked away in the sought-after Abbotsford Cove complex, this fabulous two-bedroom top floor apartment perfectly combines convenience, function and space. The bright, fresh interiors and impressive range of onsite amenities make this home exceptional in every way. A calm oasis in a coveted, serene setting.

- Spacious lounge and dining with streaming natural light
- Contemporary kitchen with bench seat and balcony access
- Large, sheltered balcony overlooking landscaped gardens
- Two double bedrooms with b/ins, luxurious master ensuite
- Bathroom incl spa bath, internal laundry, good storage
- Security entrance, air con, lift access to tandem parking
- Five onsite pools, gym, sauna, clubhouse & tennis courts
- Footsteps to CBD buses, Chiswick Wharf & waterfront parks

\* Inspections by appointment

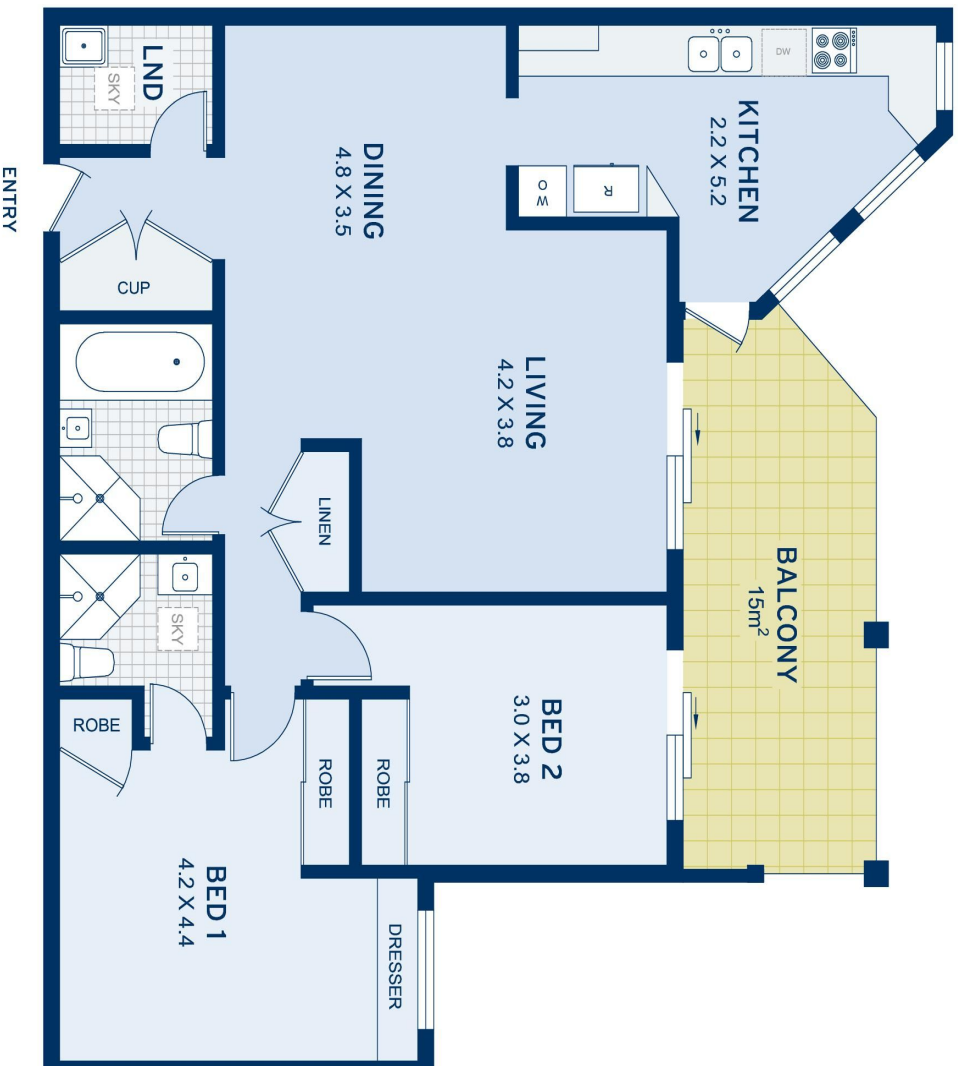
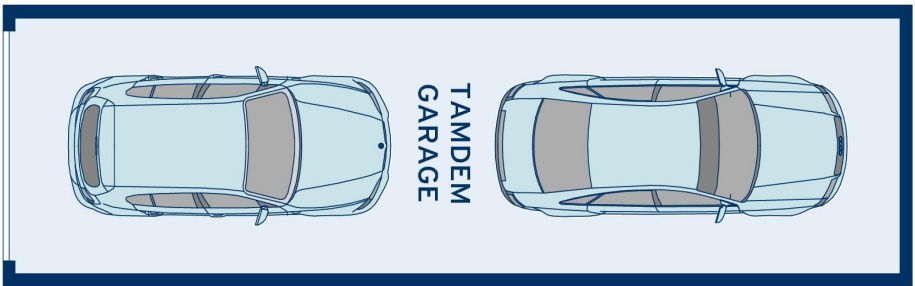


## ADDITIONAL DETAIL

Council Rates	\$289/qtr (approx)
Strata Fees	\$1,618/qtr (approx)
Water Rates	\$147/qtr (approx)
Type	Apartment
Sold Date	25/09/2020

**Tim Wieland**  
0414 282 713  
tim@ch.com.au

**Jack Hughes**  
0412 255 711  
jack@ch.com.au



APPROXIMATE AREAS	
Apartment	106sqm
Garage	33sqm
Total	139sqm
OUTGOINGS	
Council Rates	\$289pq
Water Rates	\$147 pq
Strata Rates	\$1641 pq

**Abbotsford**  
 31/1 Figtree Avenue

DISCLAIMER: This information has been prepared as a guide only. The vendor and the real estate agent, Drummoynre Estate Agency Pty Ltd (trading as Cobden & Hayson Drummoynre), make no warranties as to its accuracy and all interested parties must rely on their own enquiries.

**cobden & hayson**