

# Birchgrove

## 146 Short Street



\$1.5m

## Position, position, position

Rare opportunity to secure a Victorian terrace in Birchgrove with expansive city, Bridge and park views. Nestled above a canopy of trees overlooking Mort Bay this two-storey terrace is only a few minutes walk to the bus and ferry, and a brief stroll to the cafes and restaurants on Darling Street. Enjoying a north-facing back yard, this home is immediately liveable or open to renovation in the longer term.

- City, Bridge and park views
- Main bedroom with laced balcony and harbour views
- Large open plan lounge & dining room
- Quiet location close to public transport and stroll to Darling Street
- High ceilings and heritage terrace features
- Watch the fireworks from your own balcony



2



1

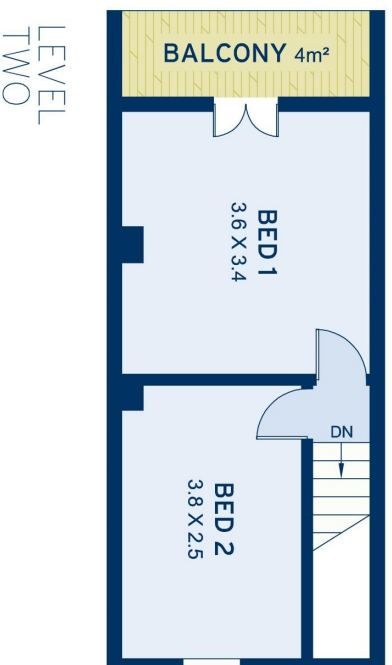
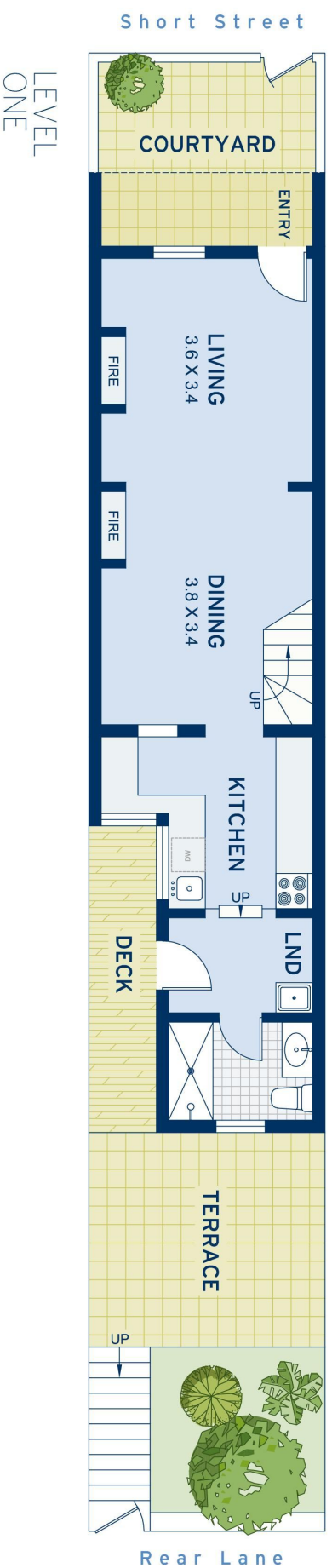
## ADDITIONAL DETAIL

Type  
Sold Date

House  
01/08/2020

**Danny Cobden**  
0411 144 210  
danny@ch.com.au

**Samantha Elvy**  
0408 664 774  
samantha@ch.com.au



APPROXIMATE AREAS	
Internal Floorpace	70sqm
External	45sqm
Land Size	88sqm
OUTGOINGS	
Council Rates	\$550 pq
Water Rates	\$274 pq

**Birchgrove**  
146 Short Street

DISCLAIMER: This information has been prepared as a guide only. The vendor and the real estate agent, Balmain Real Estate Pty Ltd and/or Balmain Estate Agency Pty Ltd (trading as Cobden & Hayson Balmain), make no warranties as to its accuracy and all interested parties must rely on their own enquiries.

cobden & hayson