

Leichhardt

19 Milton Street



\$1.9m

This home is an inviting family haven

The enduring charm of a Californian bungalow combines with fresh contemporary interiors and an adaptable layout in this double-fronted home to deliver a perfect environment for families. Opening to a landscaped north facing garden with a versatile self contained studio, the freestanding home is tucked away in a quiet street between Norton Street and Annandale village. A quiet retreat from city living, this inviting home is set in a friendly neighbourhood adjacent to a child-friendly community park with close proximity to a number of schools.

- 293sqm block on a quiet street with plentiful parking
- Flexible layout, 2 living areas and a versatile garden studio
- Large bedrooms, 2 with built-ins and a sunroom/study
- Skylit open living and dining with polished timber floors
- Contemporary Caesarstone gas kitchen with a garden view
- Lush north facing tropical gardens with entertainer's deck


3

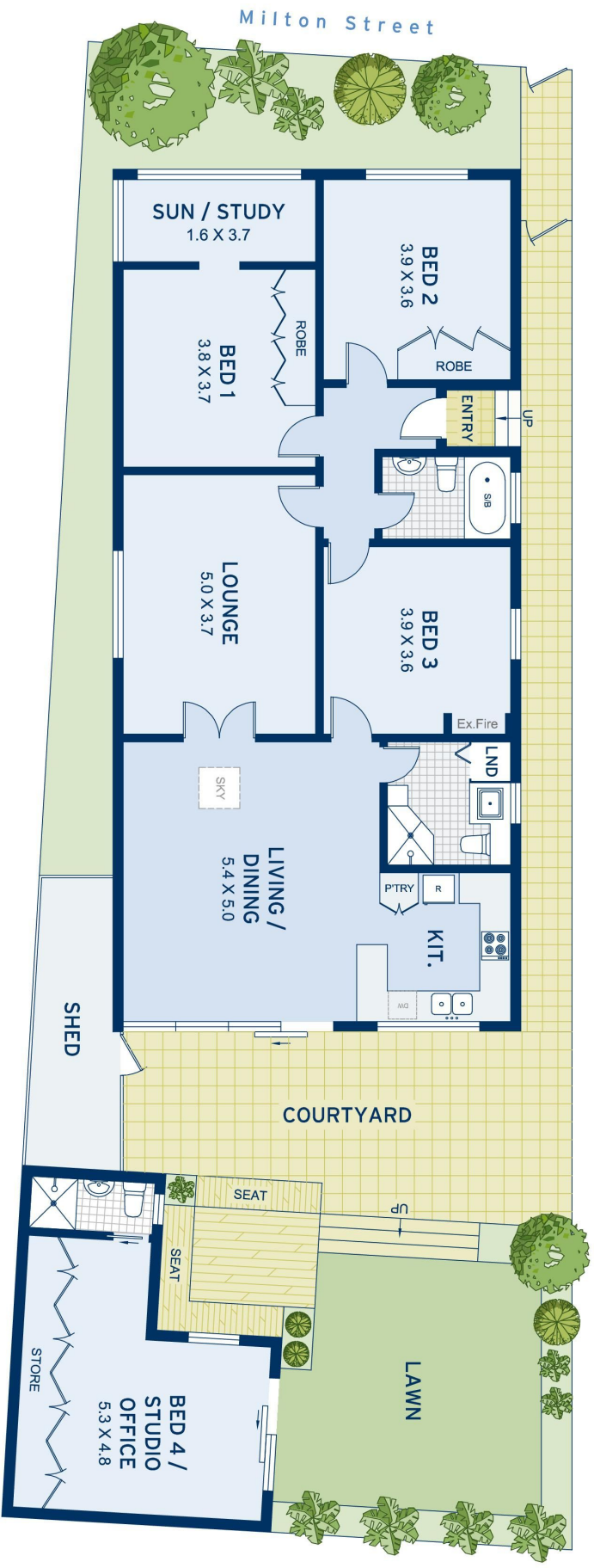

3

ADDITIONAL DETAIL

Council Rates	\$560/qtr (approx)
Water Rates	\$197/qtr (approx)
Type	House
Sold Date	15/07/2020
Land	293 Square Metres

Rita Lopresti
0419 445 340
rita@ch.com.au

Matthew Hayson
0411 519 190
matth@ch.com.au



APPROXIMATE AREAS	
Internal Floorpace	125sqm
Studio/Office	24sqm
Land Size	293sqm
OUTGOINGS	
Council Rates	\$560 pq
Water Rates	\$197 pq

Leichhardt
19 Milton Street

DISCLAIMER: This information has been prepared as a guide only. The vendor and the real estate agent, Balmain Real Estate Pty Ltd and/or Balmain Estate Agency Pty Ltd (trading as Cobden & Hayson Balmain), make no warranties as to its accuracy and all interested parties must rely on their own enquiries.

cobden & hayson