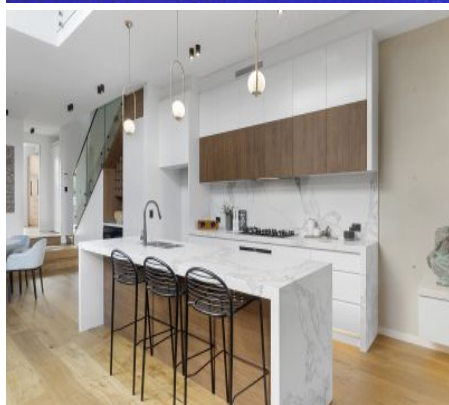
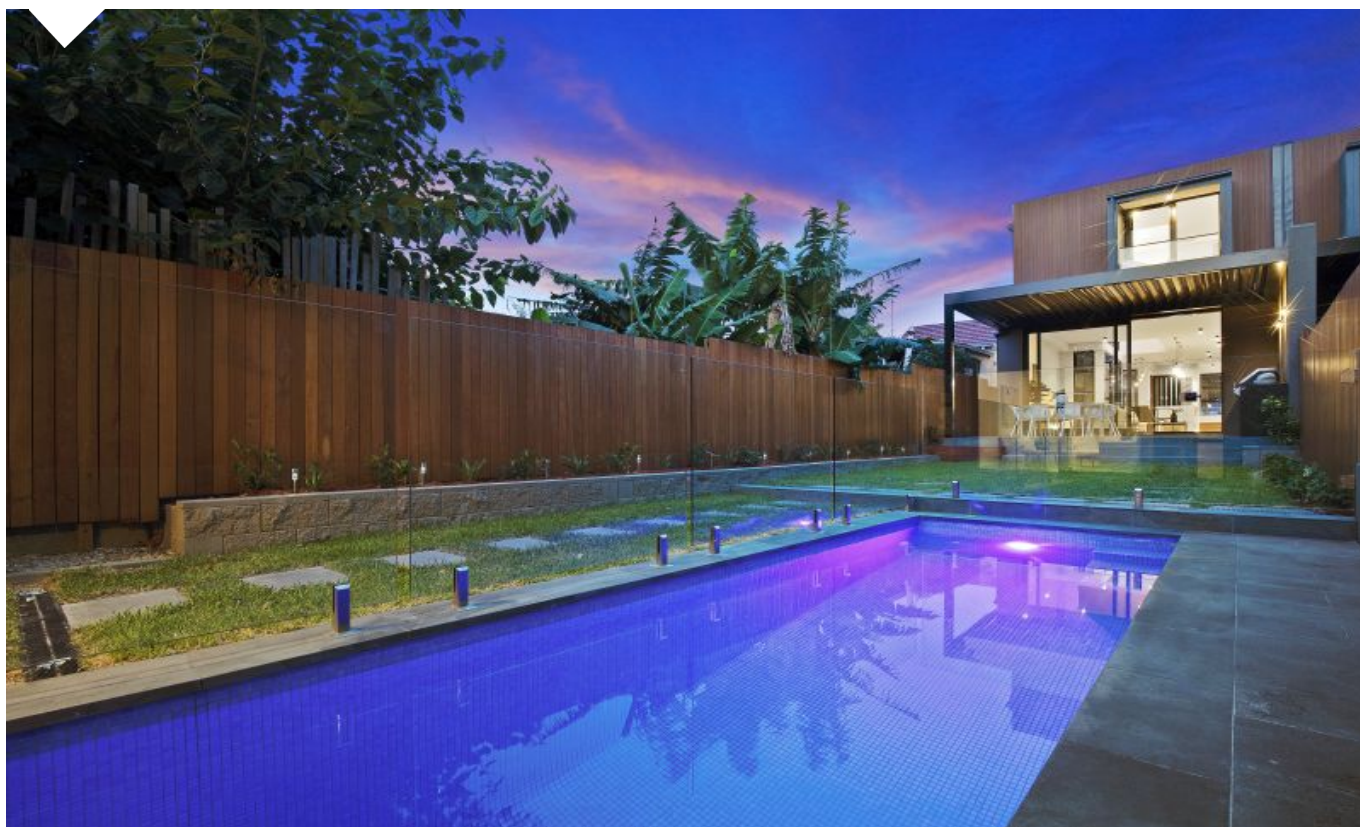


Leichhardt

28a Henry Street



Spacious High Calibre Family Creation

The high-quality design and style of this brand-new detached residence is focused on spacious contemporary living and providing the perfect home for a low maintenance lifestyle. It showcases a designer feel with high-end finishes throughout and has been expertly crafted to create a light filled retreat of quality, size and privacy. No expense has been spared to create a stunning property in one of Leichhardt's finest cul-de-sacs that's strolling distance to Pioneers Memorial Park, the light rail station and Norton Street's cafe lifestyle.

- Crisp and ultra-modern open design with generous living and dining areas
- 2.9m height ceilings, wide European Oak flooring and lots of natural light
- A seamless flow to an auto Vergola-covered dining patio with outdoor kitchen

  
5 4 1

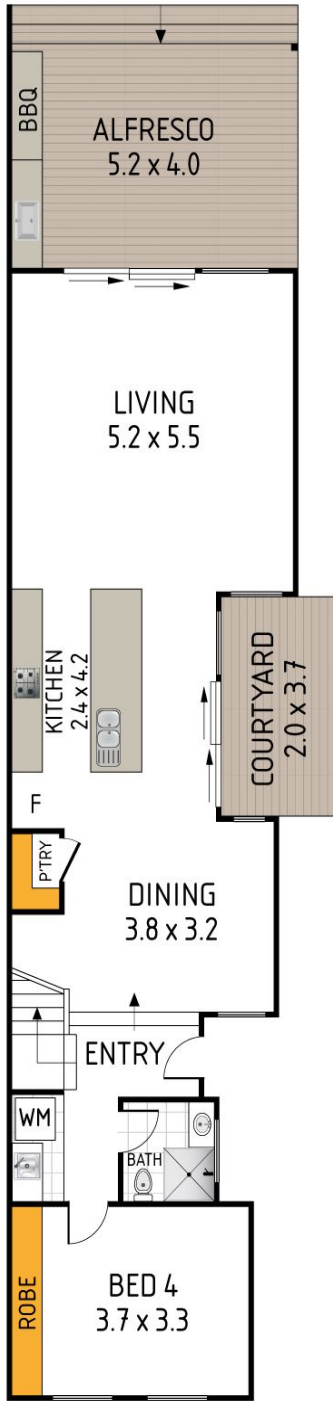
ADDITIONAL DETAIL

Type	House
Sold Date	18/05/2020
Land	307 Square Metres

Ben Southwell
0407 896 212
bens@ch.com.au

Marcus Hejtmanek
0488 019 665
marcus@ch.com.au

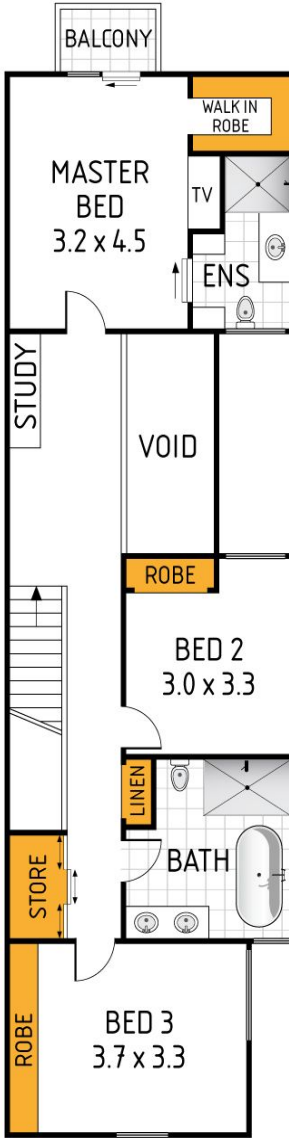
\$2.34m



GROUND FLOOR



(NOT IN POSITION)



FIRST FLOOR



SITE PLAN



28 HENRY STREET, LEICHHARDT

MARKETING DRAWING ONLY. CONFIGURATION OF SPACES IS APPROXIMATE. NOT TO SCALE.
ALL DIMENSIONS ARE APPROXIMATE. NO LIABILITY.