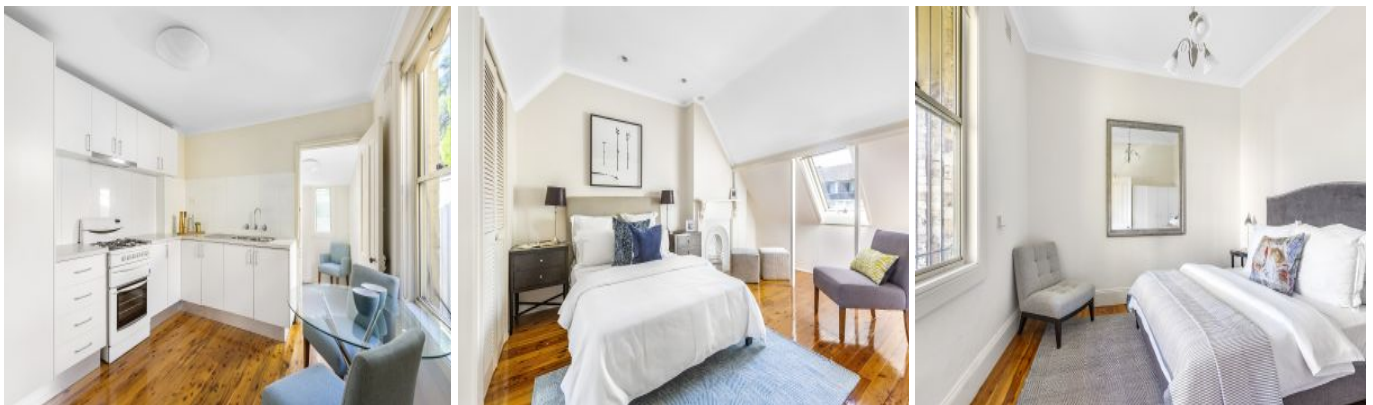


Summer Hill

32 Liverpool Road



An Inner West gem in Summer Hill

A winning blend of character, potential and position make this classic terrace a perfect entry into the Summer Hill market. Beautifully presented and cute as a button, the two-storey home forms part of a charming early 1900s row a 500m walk to the station and the cafe-lined streets and leafy pocket parks of Summer Hill village. Just one block back from historic Ashfield Park, this Inner West charmer is 7km to the city affording superb convenience as well as strong rental demand.

- Light and airy renovated terrace with a sunny front garden
- Newly polished floorboards, fresh white walls, high ceilings
- 2 double bedrooms, tidy bathroom and an internal laundry
- Lofty main bed with built-ins, fireplace and dormer window
- Living room with a fireplace, immaculate eat-in gas kitchen
- Low maintenance garden, double glazing, freshly painted
- 500m to the station, stroll to village life and Ashfield Park


2


1

ADDITIONAL DETAIL

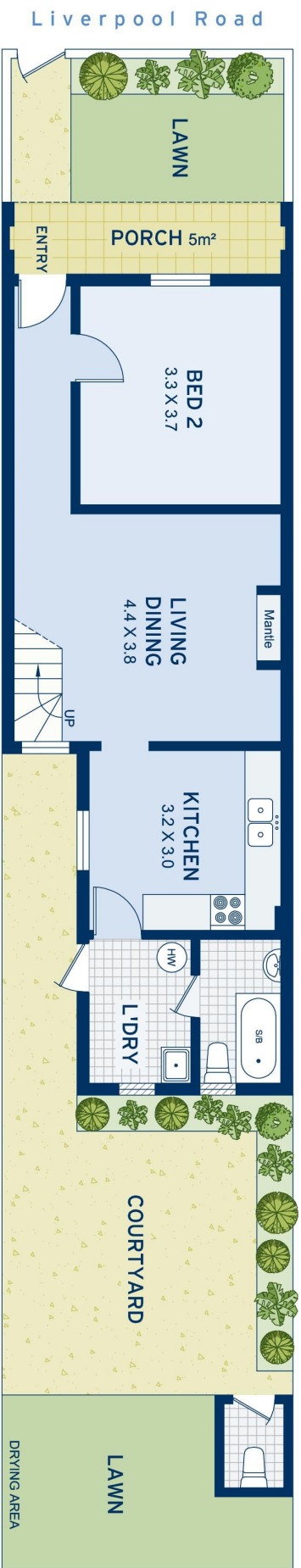
Type
Sold Date

House
04/05/2020

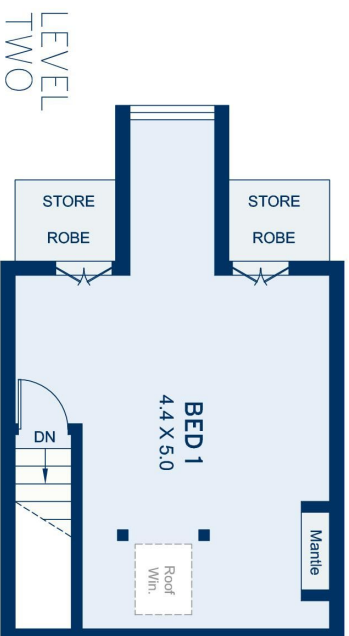
\$910k

Stephanie Zerial
0450 050 154
stephaniez@ch.com.au

Jonathan Hammond
0425 252 686
jono@ch.com.au



LEVEL ONE



APPROXIMATE AREAS	
Internal Floor Space	75sqm
External	60sqm
Land Size	107.5sqm
OUTGOINGS	
Council Rates	\$413 pq
Water Rates	\$250 pq



Summer Hill
32 Liverpool Road

DISCLAIMER: This information has been prepared as a guide only. The vendor and the real estate agent, Annandale Estate Agency Management Pty Ltd (trading as Cobden & Hayson Annandale), make no warranties as to its accuracy and all interested parties must rely on their own enquiries.

cobden & hayson