

Petersham

36 Searl Street



Contemporary Style home in a quiet leafy enclave

Superbly located in the highly sought-after enclave of North Petersham, this stunning home showcases a brand-new contemporary style transformation. It now provides quality modern living space and is peacefully positioned in one of the area's best streets with city trains and buses, local village cafes, Petersham Park and pool, and prestige schools all within strolling distance

This standout property is a beautiful home offering an outstanding lifestyle opportunity in this tightly held, community-friendly neighbourhood.

- Three large bedrooms - built-ins include a master with ensuite
- Open plan living/dining area, courtyard with an alfresco deck
- New chef style kitchen with gas cooking and stone benches
- Premium Attic space designed for office/ study
- New designer bathrooms include bath & premium fittings


3


2

\$1.5M

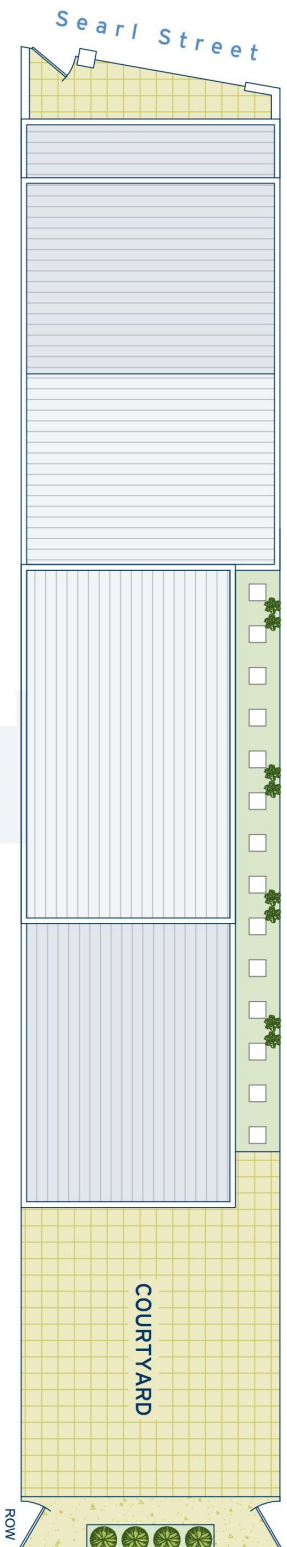
ADDITIONAL DETAIL

Council Rates	\$362/qtr (approx)
Water Rates	\$192/qtr (approx)
Type	House
Sold Date	05/03/2020
Land	107 Square Metres

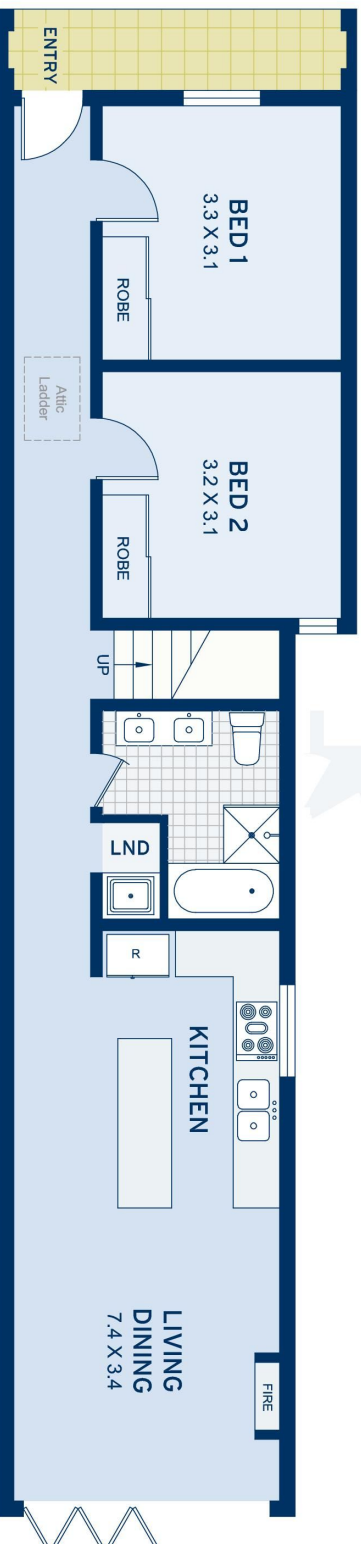
cobden hayson Marrickville

admin.marrickville@ch.com.au

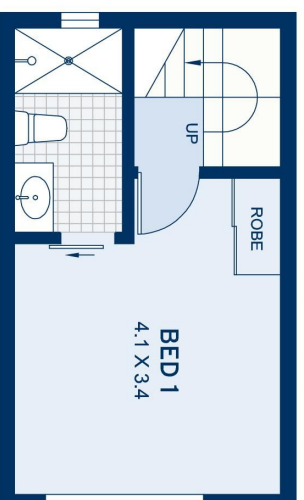
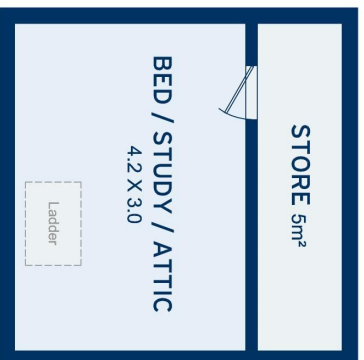
SITE PLAN



LEVEL ONE



LEVEL TWO



APPROXIMATE AREAS	
Internal Floor Space	105sqm
External	42sqm
Land Size	107.5sqm
OUTGOINGS	
Council Rates	\$362 pq
Water Rates	\$192 pq



Petersham
36 Searl Street

DISCLAIMER: This information has been prepared as a guide only. The vendor and the real estate agent, The IW Agency Pty Ltd (trading as Cobden & Hayson Earwood/Marrickville), make no warranties as to its accuracy and all interested parties must rely on their own enquiries.

cobden & hayson