

Belmore

7/529 Burwood Road



Light and Style in a brand-new living space - Belle Apartments

Set in a security building near new 2 bedrooms Apartment offering contemporary living style and comfort. Conveniently located close to schools, transports, Canterbury hospital, Belmore Sportsground, Clemton Park Village and Campsie Shopping Centre. Boasting an impressive 118sqm design.

- Two bedrooms with built-ins, main with private balcony
- Open living/ dining area flows seamlessly to covered balcony
- Sleek gas kitchen with s/s appliances and breakfast bar
- Stylish fully-tiled bathroom with separate bath and shower
- Internal laundry with dryer, split system air conditioning
- Security complex with intercom access, lift access
- The total area of 118sqm, building completed in 2016
- Easy access to surrounding Campsie, Canterbury and Lakemba

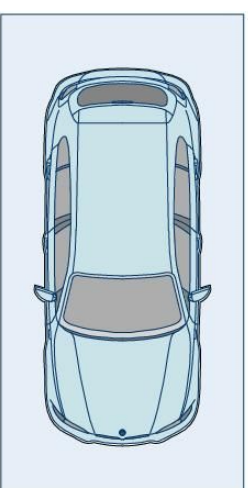
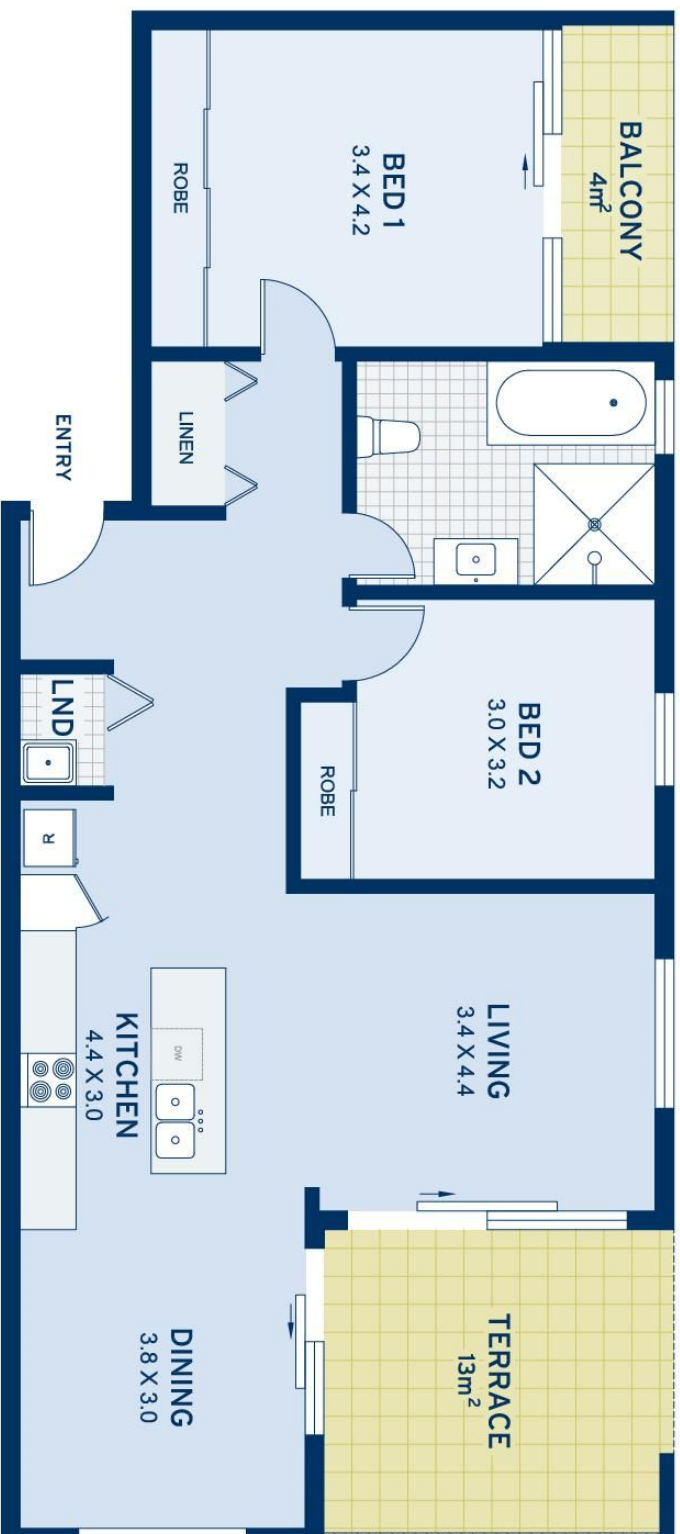


ADDITIONAL DETAIL

Council Rates	\$287/qtr (approx)
Strata Fees	\$688/qtr (approx)
Water Rates	\$228/qtr (approx)
Type	Apartment
Sold Date	26/04/2019
Land	118 Square Metres

cobden hayson Marrickville

admin.marrickville@ch.com.au



APPROXIMATE AREAS	
Internal Floor-space	85sqm
Parking & Store	16sqm
External	17sqm
Total	118sqm
OUTGOINGS	
Council Rates	\$287 pq
Water Rates	\$228 pq
Strata Rates	\$688 pq

Belmore
7/529 Burwood Road

DISCLAIMER: This information has been prepared as a guide only. The vendor and the real estate agent, Annadale Estate Agency Management Pty Ltd (trading as Cobden & Hayson Annadale), make no warranties as to its accuracy and all interested parties must rely on their own enquiries.

cobden & hayson