

Leichhardt

34 Wetherill Street



Undisclosed

STUNNING RENOVATED VICTORIAN TERRACE

This much-loved family home absolutely oozes curb appeal with its impressive facade. Architecturally-inspired interiors enjoy an abundance of natural light and a versatile choice of generous living spaces that combine to create a stylish haven, perfect for those seeking the ultimate in lifestyle perfection.

- Multiple living zones can be easily tailored to your needs
- Light-filled gourmet kitchen with stone benchtops & island
- Alluring entertaining terrace and tranquil garden escape
- Four spacious level bedrooms offer complete privacy
- 3rd floor retreat ideal for home office or 5th bedroom
- Two stylish bathrooms, additional w/c, separate laundry
- City views from master bedroom with enlarge terrace
- Ducted AC, built-ins in all rooms, solar panels, alarmed
- Moments to buzzing shops, cafes, parks and CBD transport



4



2

ADDITIONAL DETAIL

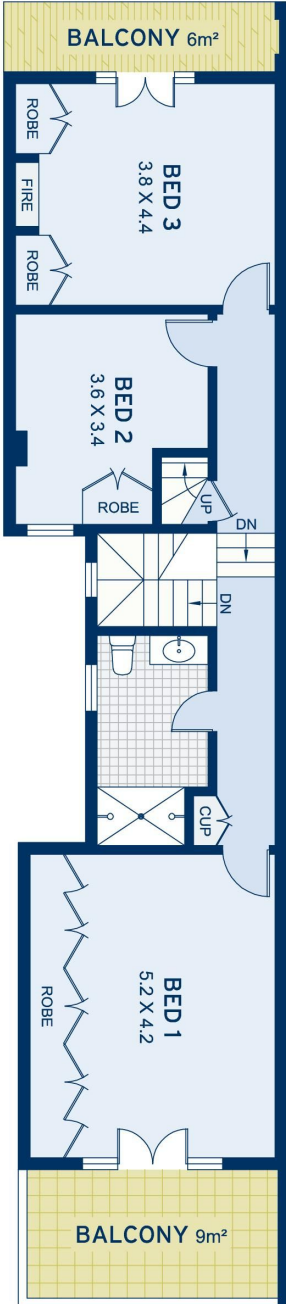
Type
Sold Date
Land

House
04/11/2019
208 Square Metres

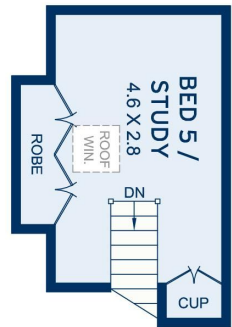
David Carrozza
0411 296 796
david@ch.com.au

Alex Mastoris
0414 567 878
alex@ch.com.au

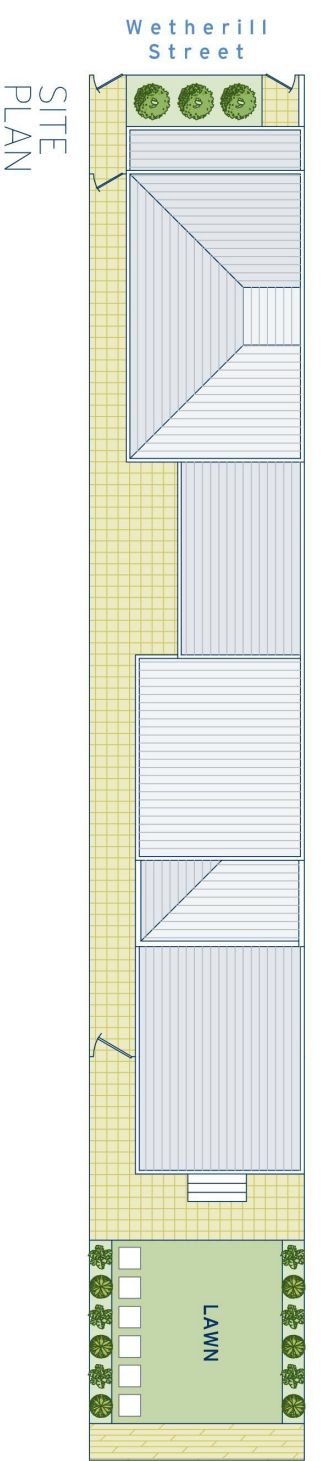
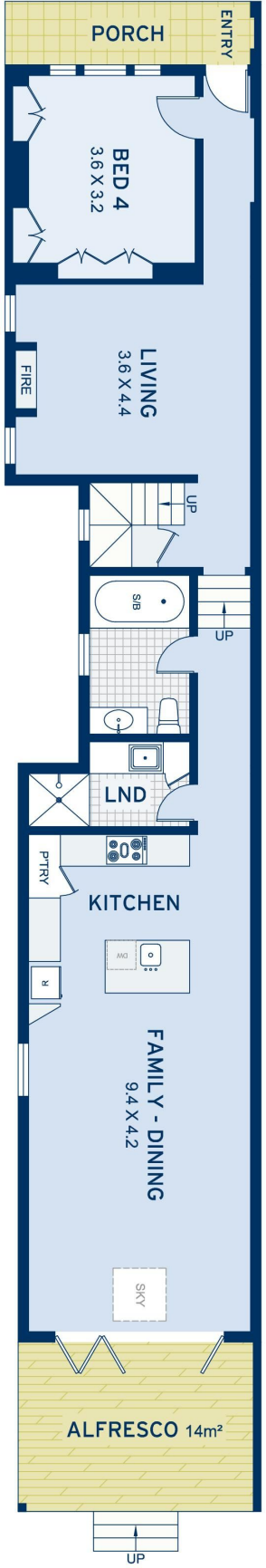
LEVEL TWO



LEVEL THREE



LEVEL ONE



APPROXIMATE AREAS	
Internal Floorpace	185sqm
External	130sqm
Land Size	208sqm
OUTGOINGS	
Council Rates	\$414 pq
Water Rates	\$198 pq



Leichhardt
34 Wetherill Street

DISCLAIMER: This information has been prepared as a guide only. The vendor and the real estate agent, Annandale Estate Agency Management Pty Ltd (trading as Cobden & Hayson Annandale), make no warranties as to its accuracy and all interested parties must rely on their own enquiries.

cobden & hayson