

Abbotsford

27/1 Harbourview Crescent



\$1.025m

Sun, space and resort-style facilities

Being offered for the first time, this spacious three-bedroom apartment with leafy outlook offers a fantastic lifestyle with the convenience of apartment living in the award-winning Abbotsford Cove. Surrounded by manicured waterfront grounds and featuring level lift access to a 49sqm garage, the first floor apartment enjoys access to superb resort style facilities including five pools, tennis courts, a gym and recreational clubhouse

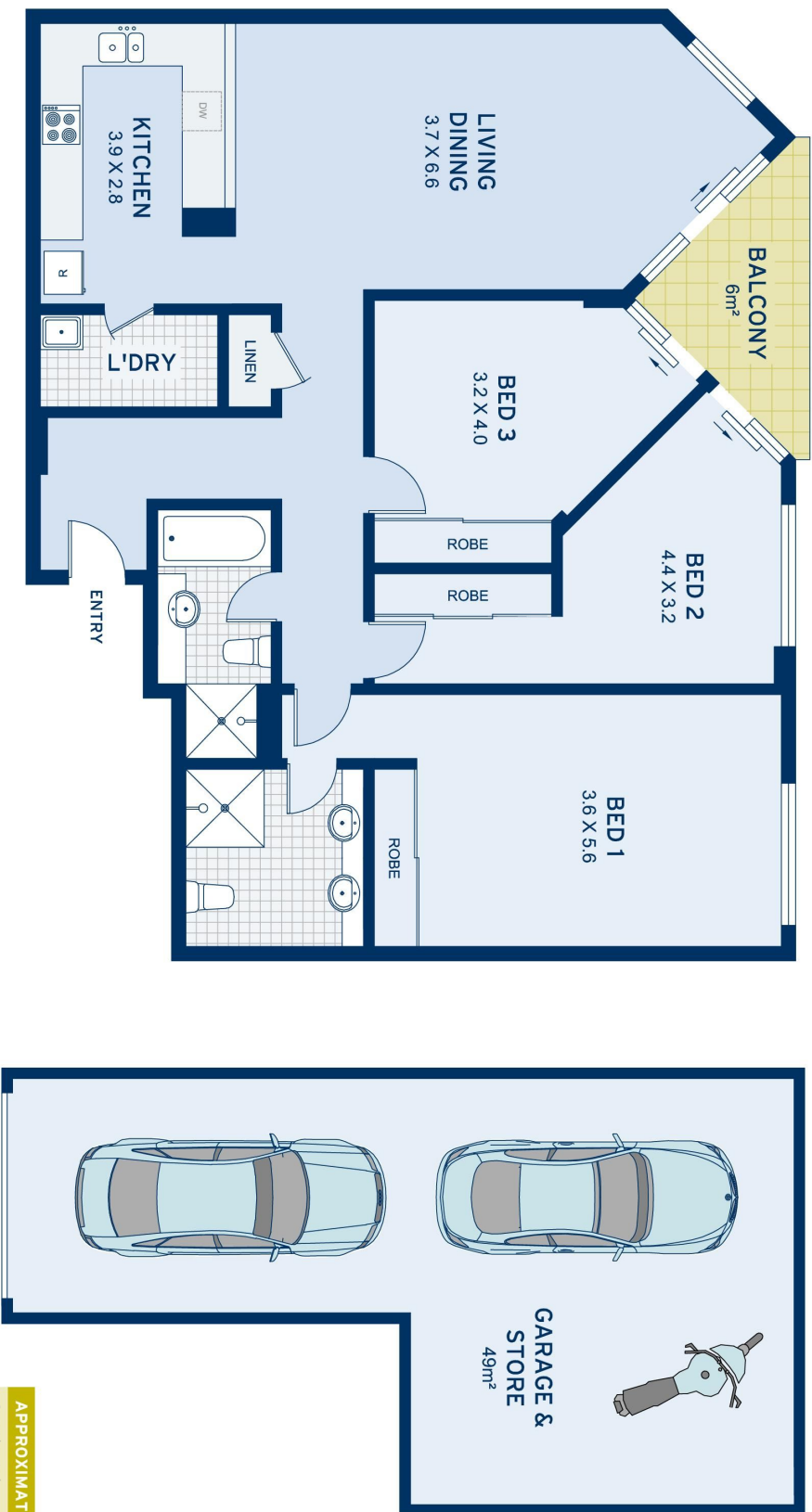
- A sunny northerly aspect and private open leafy outlook
- Well-conceived layout, separate living and bedroom wings
- 3 double bedrooms with built-ins, 2 open out to the terrace
- King-sized master featuring an ensuite with double vanity
- Large modern gas kitchen with an adjoining laundry room
- Open plan living and dining, NW facing leafy outlook terrace
- Double lock-up garage with 20sqm approx storage space

 **3**
 **2**
 **2**

ADDITIONAL DETAIL

Council Rates	\$276/qtr (approx)
Strata Fees	\$1,139/qtr (approx)
Water Rates	\$172/qtr (approx)
Type	Apartment
Sold Date	08/08/2019

Mia Fredrix
0416 223 699
mia@ch.com.au



APPROXIMATE AREAS	
Apartment	126sqm
Garage	49sqm
Total	175sqm
OUTGOINGS	
Council Rates	\$276 pq
Water Rates	\$172 pq
Strata Rates	\$1139 pq



Abbotsford
27/1 Harbourview Crescent

DISCLAIMER: This information has been prepared as a guide only. The vendor and the real estate agent, Drummond Estate Agency Pty Ltd (trading as Cobden & Hayson Drummond), make no warranties as to its accuracy and all interested parties must rely on their own enquiries.