

Stanmore

80 Cardigan Street



\$1.86m

A prime canvas for creative renovation

Make your mark on this classic freestanding Federation home and capitalise on its fantastic location, original features and enormous potential. On the market for the first time in 26 years, the double-fronted home is set on a wide tree-lined street around the corner from O'Dea Reserve with close proximity to Newtown, Sydney Uni and RPA Hospital. With scope to add a level (STCA), the full brick classic is set on 360sqm.

- A quiet street a short stroll to cafes, shops and parkland
- 4 double bedrooms and a sunroom, original bathrooms
- Fluid living and dining space, neat and tidy gas kitchen
- Polished timber floors, high ceilings and original fretwork
- Leafy courtyard, scope to open out/extend the rear STCA
- Private elevated setting with a traditional front verandah
- An easy commute to the city, 900m to Stanmore station
- Fantastic opportunity to renovate/recreate and capitalise



4



2

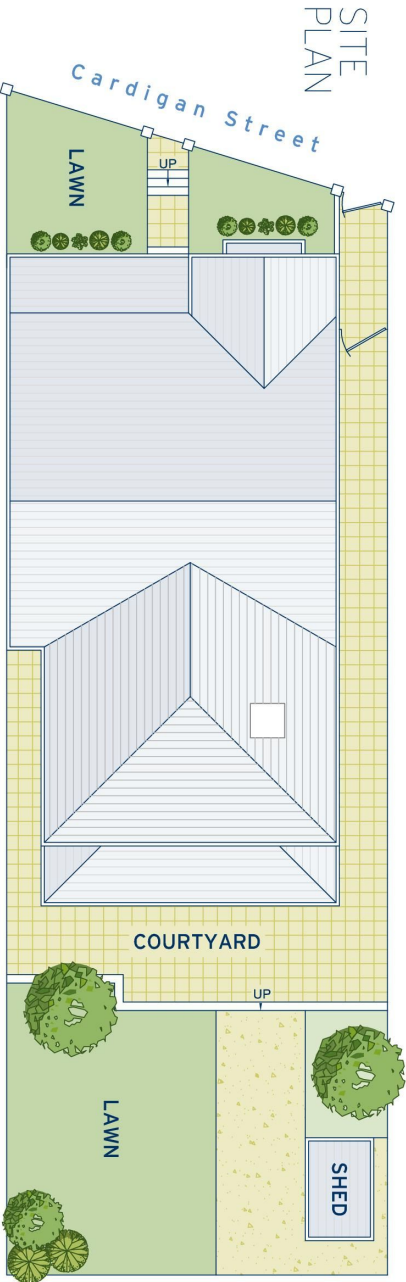
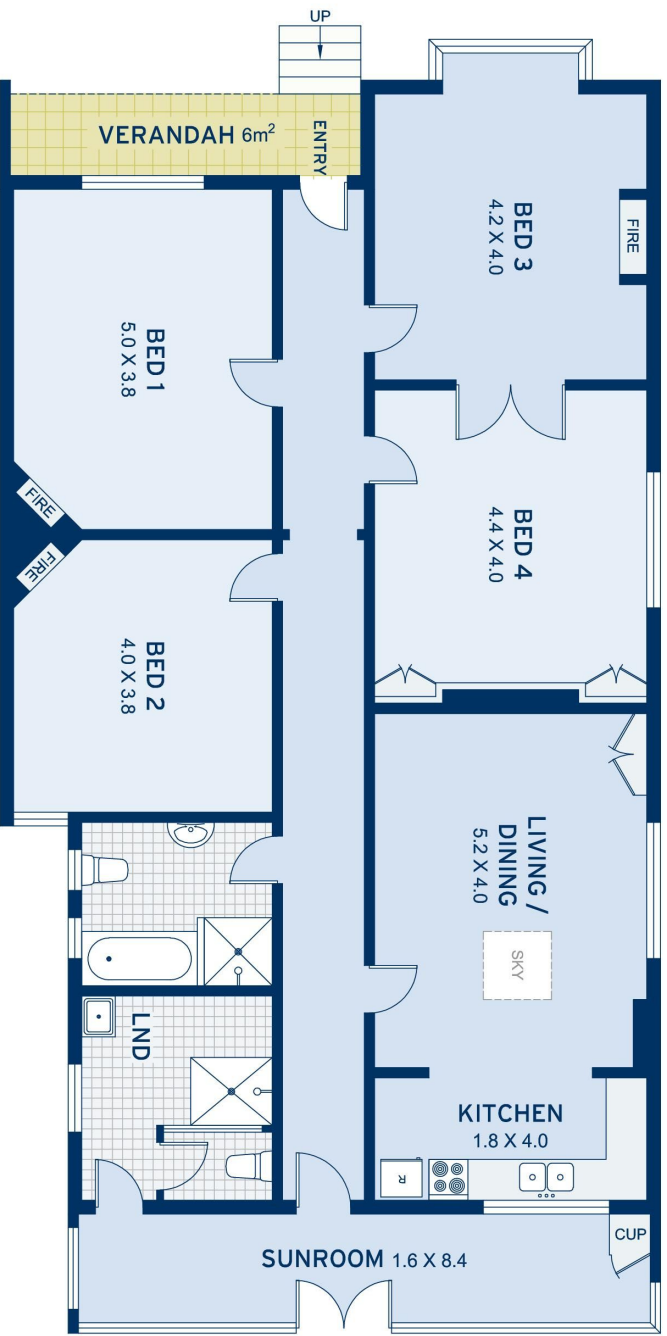
ADDITIONAL DETAIL

Type
Sold Date

House
12/07/2019

Jonathan Hammond
0425 252 686
jono@ch.com.au

Stephanie Zerial
0450 050 154
stephaniez@ch.com.au



APPROXIMATE AREAS	
Internal Floorpace	155sqm
External	205sqm
Land Size	360sqm
OUTGOINGS	
Council Rates	\$478 pq
Water Rates	\$192 pq

Stanmore
80 Cardigan Street

DISCLAIMER: This information has been prepared as a guide only. The vendor and the real estate agent, Annandale Estate Agency Management Pty Ltd (trading as Cobden & Hayson Annandale), make no warranties as to its accuracy and all interested parties must rely on their own enquiries.

cobden & hayson