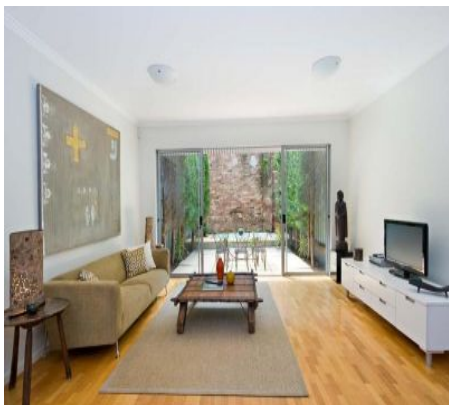


Camperdown

6 Marsden Street



Bright and spacious three bedroom terrace

Conveniently located, this bright and spacious three bedroom two storey terrace home combines generous living spaces and modern finishes. Easy walking distance to bustling King Street, Newtown's plethora of restaurants and cafes.

- Spacious open plan living & dining with polished parquet floors
- Three good sized bedrooms
- Main with ensuite and balcony
- Modern kitchen with gas cooking and dishwasher
- Internal laundry
- Lock up garage with internal access to property
- High ceilings
- Air conditioning
- Alarm system
- Quiet location and close proximity to CBD transport

		
3	2	1

ADDITIONAL DETAIL

Type

House

\$980 per week pw

Christie Nguyen

christie@ch.com.au