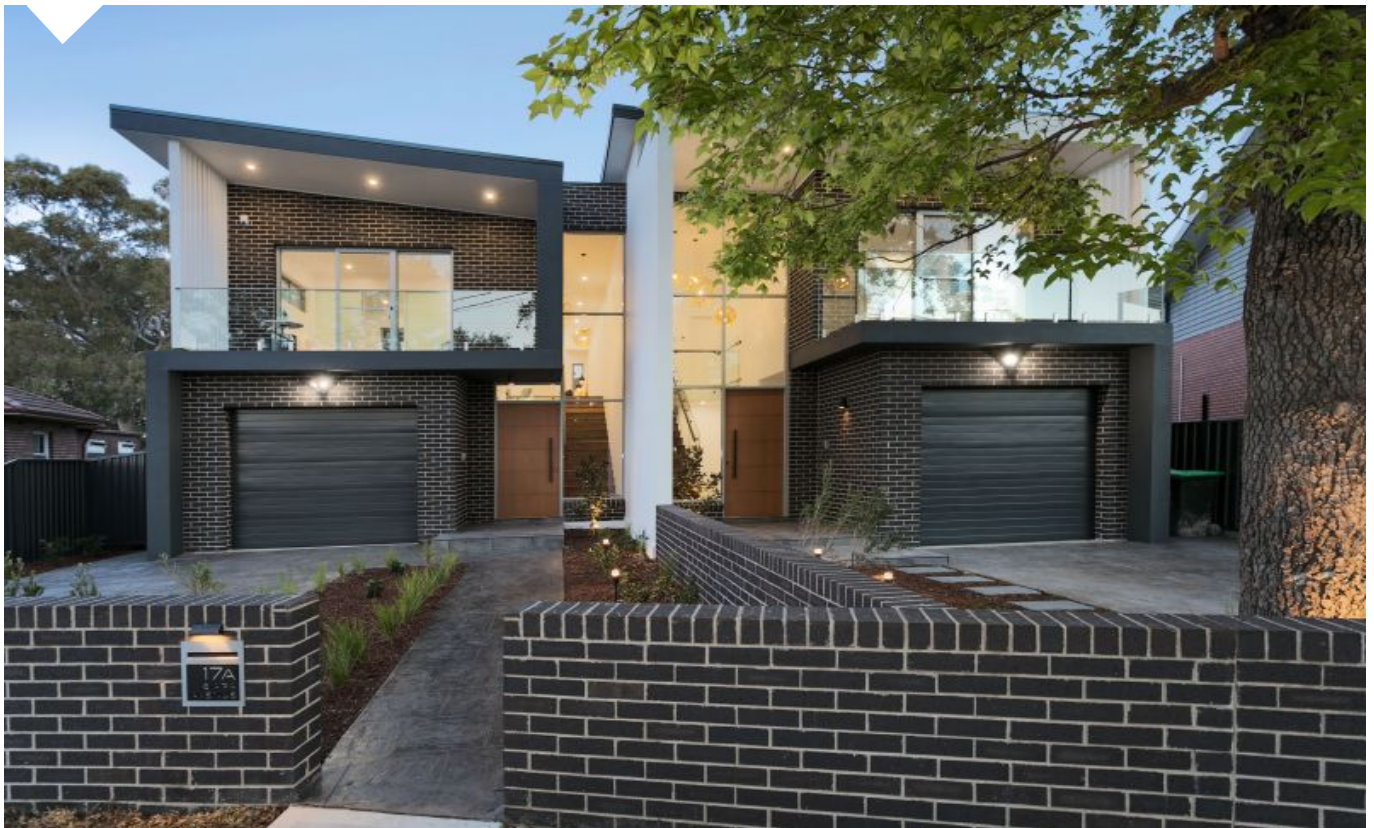


# Clemton Park

## 17A Biara Avenue



Undisclosed

## A new way of contemporary living

Designer luxury and ultra-modern style define this brand-new residence where custom finishes, a spacious two-level layout and outstanding quality combine to create an immaculate lifestyle home. This is the essence of family excellence boasting a striking modern facade and a low maintenance design, plus it sits in a quiet cul-de-sac setting that is walking distance to local shopping, schools and bus transport.

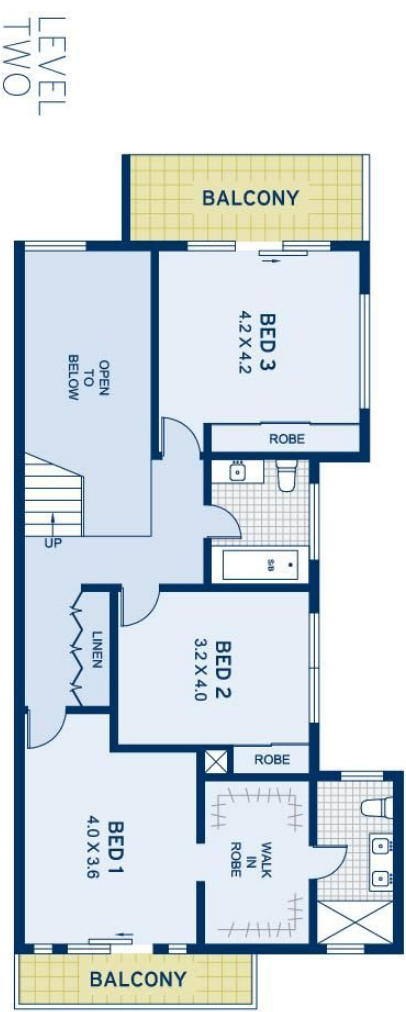
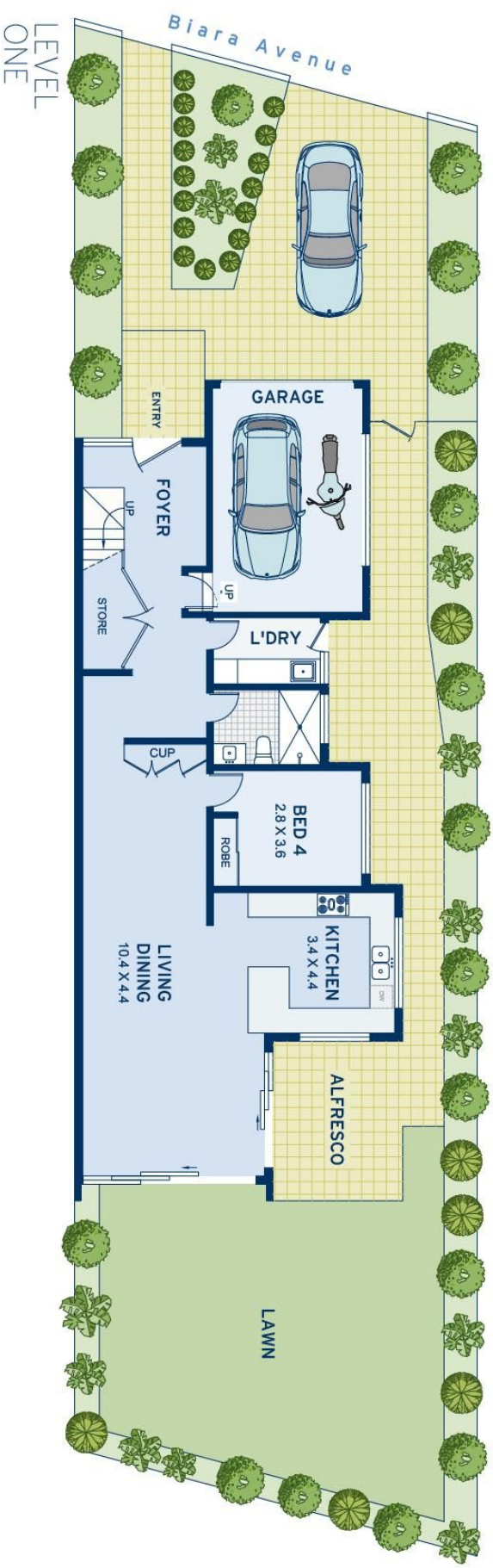
- Cleverly designed to take full advantage of light, airflow and space
- Light filled open interiors feature generous living and dining areas
- An easy level flow to a private entertainers' patio and grassed garden
- Sleek kitchen with stone breakfast bar and integrated Smeg fittings



## ADDITIONAL DETAIL

Type	House
Sold Date	22/09/2018

**Jim Nikolopoulos**  
0406 626 663  
jim@ch.com.au



APPROXIMATE AREAS	
Internal FloorSpace	190sqm
Garage	20sqm
Land Size	337sqm
OUTGOINGS	
Council Rates	\$XXXX pq
Water Rates	\$XXXX pq



**Clemton Park**  
17A Biara Avenue

DISCLAIMER: This information has been prepared as a guide only. The vendor and the real estate agent, The IW Agency Pty Ltd (trading as Cobden & Hayson, Fairwood/Marrickville), make no warranties as to its accuracy and all interested parties must rely on their own enquiries.

cobden & hayson