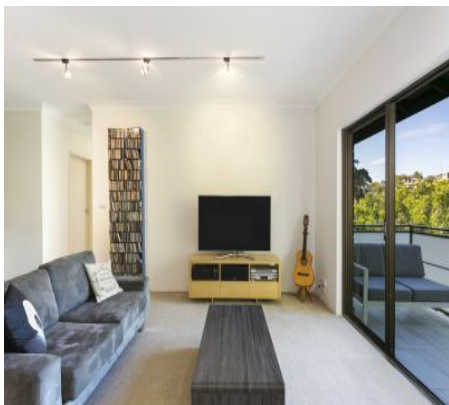


# Glebe

## 29/215 Bridge Road



## Sensational urban retreat

In an unexpected contrast to its thriving urban address, this delightful top floor apartment exudes a welcoming sense of tranquillity positioned on the rear north-east corner of 'Bridge Gardens' amongst a leafy canopy. Seriously spacious, it has been superbly renovated to create a smart contemporary retreat just steps to the village, parks, bus and light rail.

- Easy access to the rear via York Street, sun washed
- Completely peaceful and private, spacious balcony
- Expansive living and dining with custom cabinetry
- Large stone topped gourmet kitchen, ample storage
- Two light filled bedrooms, master suite with robes
- Stunning bathroom, freestanding bath, separate toilet
- Designer lighting, garden setting, internal access LUG

		
2	1	1

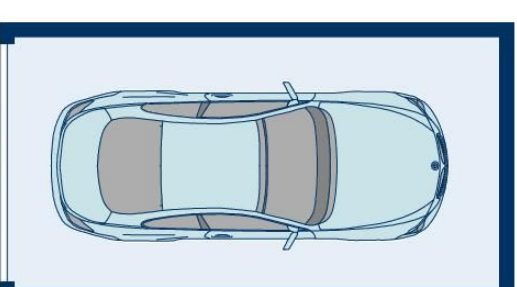
### ADDITIONAL DETAIL

Council Rates	\$246/qtr (approx)
Strata Fees	\$1,300/qtr (approx)
Water Rates	\$178/qtr (approx)
Type	Apartment
Sold Date	22/03/2018

\$1.01m

Christie Nguyen

christie@ch.com.au



**GARAGE**



APPROXIMATE AREAS	
Apartment	90sqm
Garage	15sqm
Total	105sqm
OUTGOINGS	
Council Rates	\$246 pq
Water Rates	\$178 pq
Strata Rates	\$1310 pq

**Glebe**  
29/215 Bridge Road

DISCLAIMER: This information has been prepared as a guide only. The vendor and the real estate agent, Balmain Real Estate Pty Ltd and/or Balmain Estate Agency Pty Ltd (trading as Cobden & Hayson Balmain), make no warranties as to its accuracy and all interested parties must rely on their own enquiries.

**cobden & hayson**