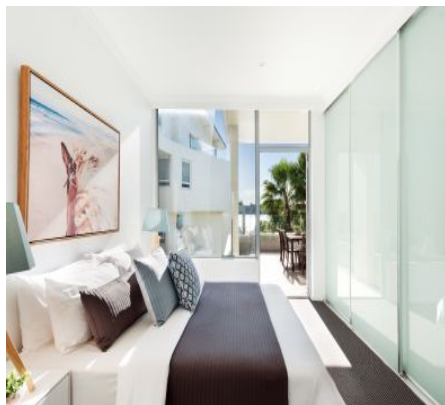


# Chiswick

## 344/1 The Promenade



### Luxury living on the waterfront

Luxurious interiors, tranquil bay views and an enormous terrace deliver the perfect environment for entertaining in this waterfront apartment. Set in the exclusive Riviera complex, impeccably appointed interiors, lush surrounds and resort-style facilities create a first-class lifestyle address just 9km to the city.

- A prized corner setting with a sunny northerly aspect
- Large bedrooms with built-ins, luxurious bathrooms
- Master with an ensuite and terrace access, ducted air
- Stylish glass-fronted living space with an idyllic outlook
- Sun-drenched terrace overlooking Abbotsford Bay
- Gourmet gas kitchen, marble and cesarstone finishes
- Internal laundry, lock-up garage, secure lift access,
- Indoor and outdoor pools, spa, sauna, gym, tennis court

		
2	2	1

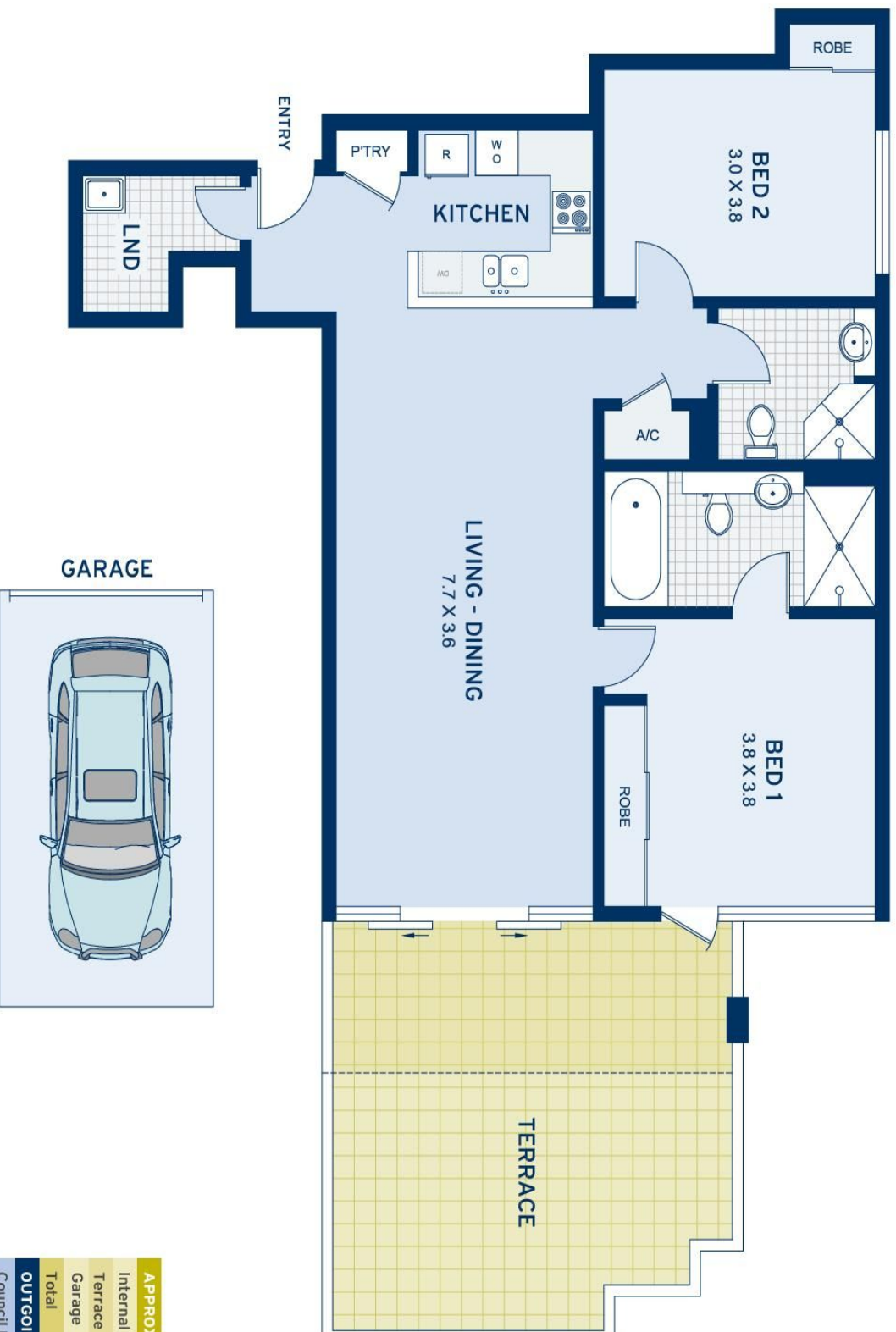
\$1.09m

### ADDITIONAL DETAIL

Council Rates	\$198/qtr (approx)
Strata Fees	\$2,100/qtr (approx)
Water Rates	\$178/qtr (approx)
Type	Apartment
Sold Date	02/06/2016

Kelly Petrini

kelly@ch.com.au



APPROXIMATE AREAS	
Internal Floorpace	90sqm
Terrace	29sqm
Garage	17sqm
<b>Total</b>	<b>136sqm</b>
OUTGOINGS	
Council Rates	\$198 pq
Water Rates	\$178 pq
Strata Rates	\$2100 pq

# Chiswick

## 344/1 The Promenade

DISCLAIMER: This information has been prepared as a guide only. The vendor and the real estate agent, Balmain Real Estate Pty Ltd and/or Balmain Estate Agency Pty Ltd (trading as Cobden & Hayson Balmain), make no warranties as to its accuracy and all interested parties must rely on their own enquiries.