

Campsie

9 Nowra Street



\$930k

A fresh take on classic cottage charm

Views over Cooks River to Canterbury Park Racecourse create an idyllic backdrop to the sun-drenched garden of this tastefully recreated 1920s bungalow. A fusion of classic charm and contemporary flair create a welcoming vibe in this beautifully presented two-bedroom home on the edge of Little Tasker Park.

- Double beds with built-ins, classic high ornate ceilings
- Stylish living room, ornamental fireplace, timber floors
- Custom-designed island kitchen with Ironbark benchtops
- Charming breakfast snug, all-weather entertaining deck
- Sunny north-east facing garden with a peaceful outlook
- Designer bathroom, separate laundry, exposed brick wall
- Double parking, side access, scope for a 2nd level STCA
- Family friendly setting, stroll to Canterbury Aquatic Centre



2

1

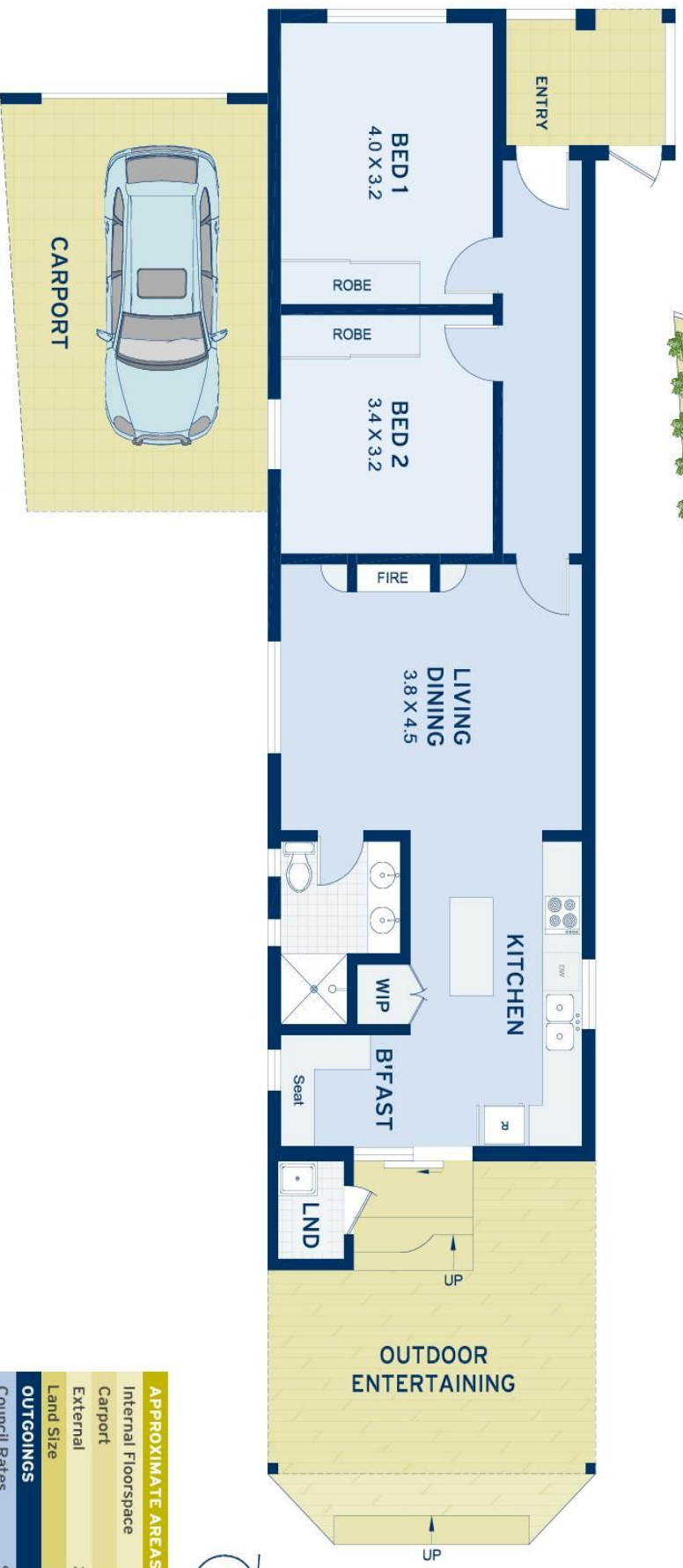
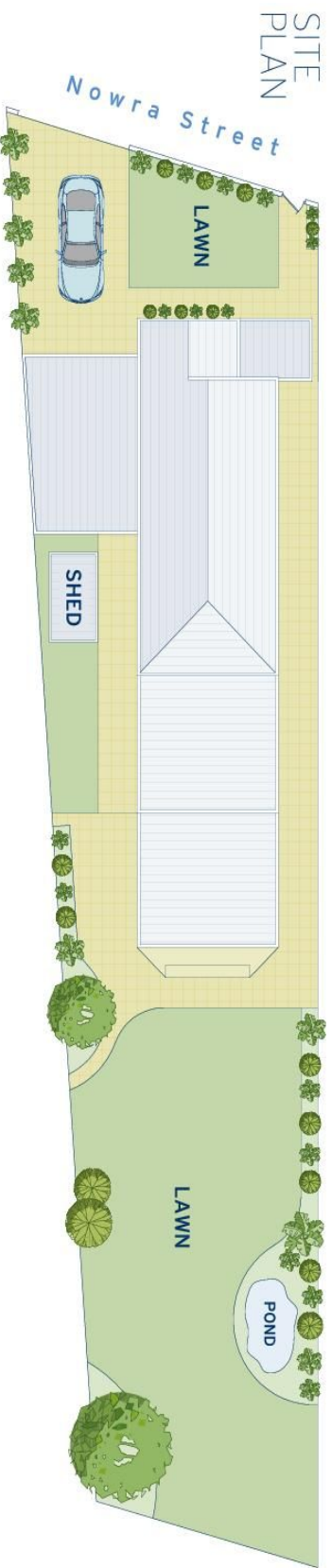
2

ADDITIONAL DETAIL

Council Rates	\$401/qtr (approx)
Water Rates	\$201/qtr (approx)
Type	House
Sold Date	11/04/2016
Land	411 Square Metres

Kelly Petrini

kelly@ch.com.au



APPROXIMATE AREAS	
Internal Floor Space	72sqm
Carport	22sqm
External	313sqm
Land Size	411sqm
OUTGOINGS	
Council Rates	\$401 pq
Water Rates	\$200 pq

Campsie
9 Nowra Street

DISCLAIMER: This information has been prepared as a guide only. The vendor and the real estate agent, Balmain Real Estate Pty Ltd and/or Balmain Estate Agency Pty Ltd (trading as Cobden & Hayson Balmain), make no warranties as to its accuracy and all interested parties must rely on their own enquiries.