

Rozelle

Level 2/2A Padstow Street



Ultimate luxury and dazzling views

Architect designed to create the ultimate environment for luxury living and entertaining, this innovative work-of-art has been crafted to maximise spectacular cityscape views. Wrapped in terraces and embracing a tranquil Zen-inspired garden oasis, it's crowned with a unique rooftop set against a dazzling backdrop.

- Innovative freestanding home, unique glass atrium entry
- Flexible layout, high-end finishes, cutting-edge security
- Lower level living, ideal office or teen/guest retreat
- 3 large beds with built-ins, luxurious limestone baths
- Designer island gas kitchen and glass-embraced dining
- Living with wet bar and wraparound terrace, ducted air
- Private roof terrace, deluxe integrated bbq and jacuzzi
- LUG + secure pkg, secluded setting in the village heart

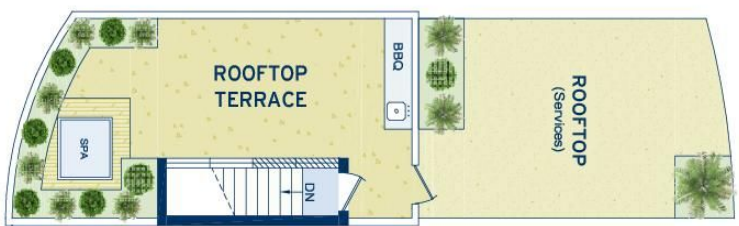
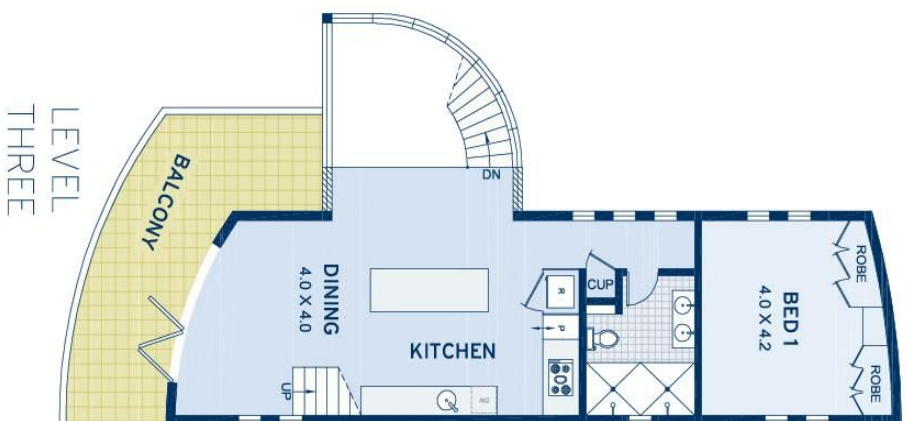
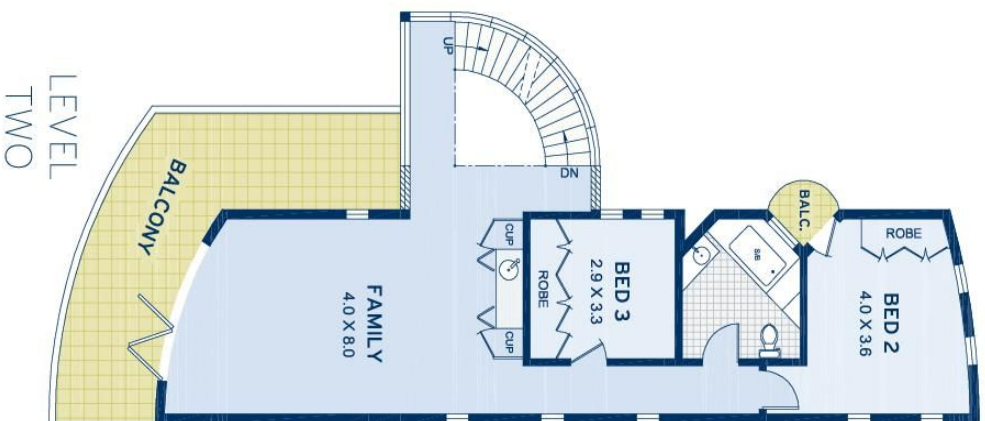
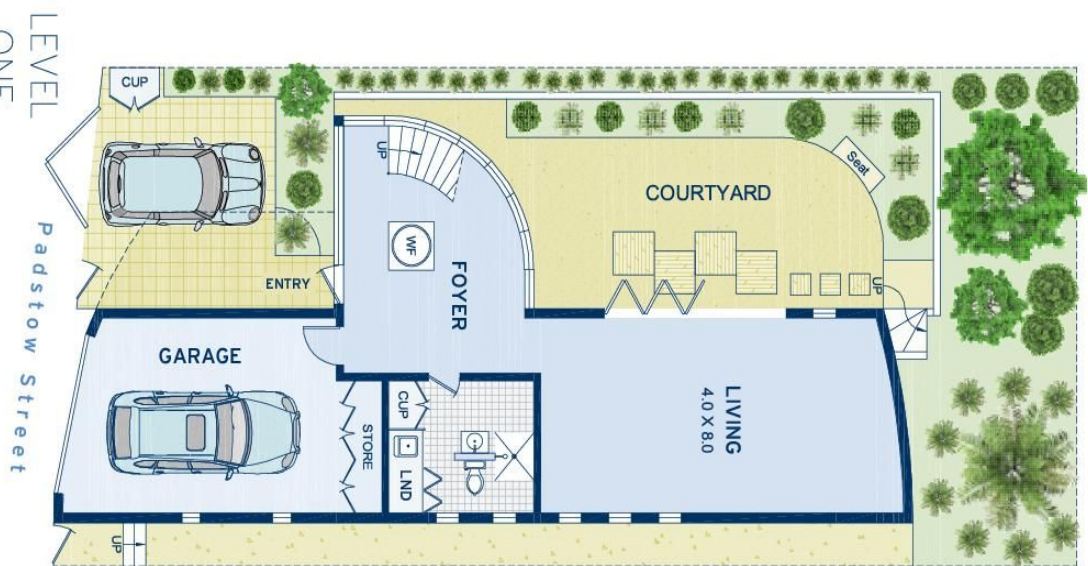
		
3	3	2

ADDITIONAL DETAIL

Council Rates	\$403/qtr (approx)
Water Rates	\$191/qtr (approx)
Type	House
Sold Date	13/05/2014

Peter Gordon
0410 639 989
peter@ch.com.au

Undisclosed



APPROXIMATE AREAS	
Internal Floorspace	201sqm
Garage	26sqm
External	176sqm
Total	403sqm
OUTGOINGS	
Council Rates	\$403 pq
Water Rates	\$191 pq

Rozelle

2A Padstow Street

DISCLAIMER: This information has been prepared as a guide only. The vendor and the real estate agent, Balmain Real Estate Pty Ltd and/or Balmain Estate Agency Pty Ltd (trading as Cobden & Hayson), make no warranties as to its accuracy and all interested parties must rely on their own enquiries.