

# Annandale

## 76 View Street



\$1.615m

## Rare offering in premier location

"Evelyn" stands proud in one of Annandale's most prestigious streets. Overflowing with classic charm, this home boasts an uplifting sense of light, style and privacy, redefining the "wow" factor. Soaring ceilings and original stained glass, alongside inspired modern touches, make this an iconic residence with tremendous appeal.

- Formal lounge exudes contemporary elegance, original fireplace
- Impeccable kitchen/dining, chef's oven, double sink, wine rack
- Breathtaking travertine-tiled bathroom, luxury double shower
- 2 bedrooms, 1 with built-in bed, storage and side tables
- Bedrooms open onto serene courtyard maximising relaxed living
- Secluded rear garden oasis with covered entertainer's deck
- Superb attic/study, workshop, laundry, extra w/c

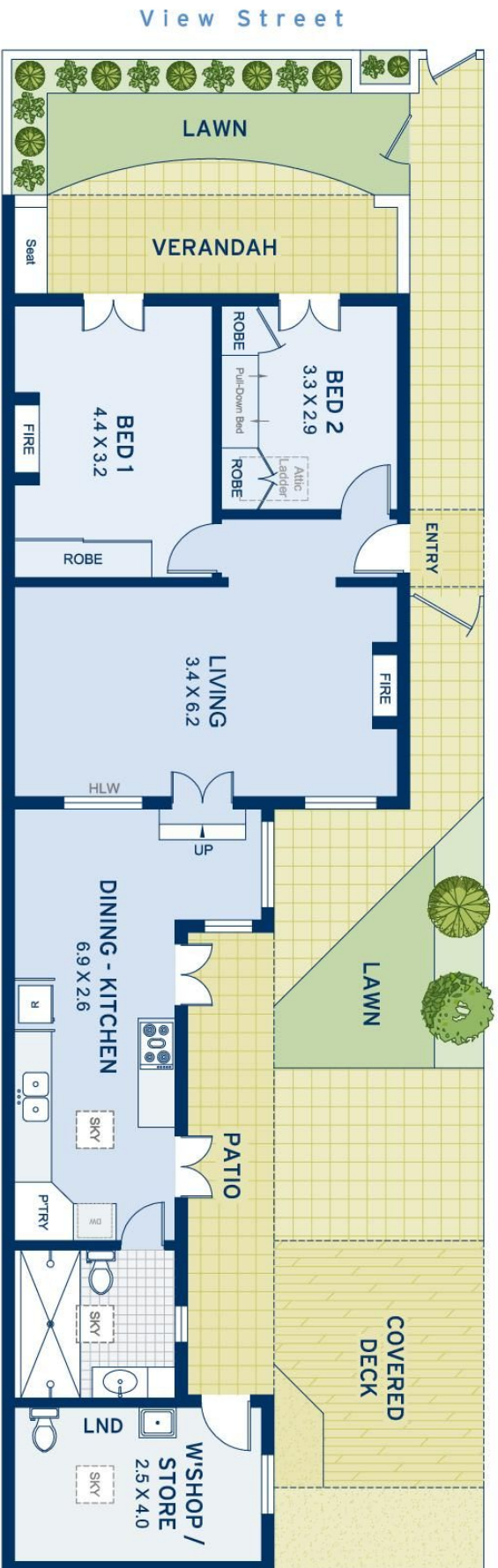
  
2

  
1

## ADDITIONAL DETAIL

Council Rates	\$263/qtr (approx)
Water Rates	\$188/qtr (approx)
Type	House
Sold Date	21/02/2017
Land	190 Square Metres

**Julie Hatch**  
0413 672 287  
julie@ch.com.au



LEVEL ONE



LEVEL TWO

APPROXIMATE AREAS	
Internal Floor/space	88sqm
Attic	17sqm
External	94sqm
Land Size	190sqm
OUTGOINGS	
Council Rates	\$263 pq
Water Rates	\$187 pq



**Annandale**  
76 View Street

DISCLAIMER: This information has been prepared as a guide only. The vendor and the real estate agent, Annandale Estate Agency Management Pty Ltd (trading as Cobden & Hayson Annandale), make no warranties as to its accuracy and all interested parties must rely on their own enquiries.

**cobden & hayson**